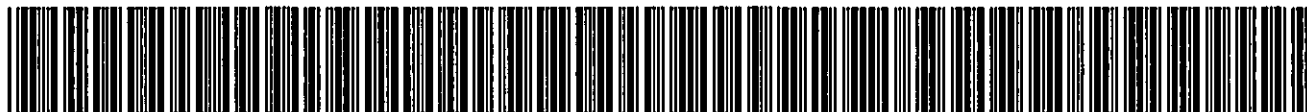


Date Printed: 04/23/2009

JTS Box Number: IFES_72
Tab Number: 119
Document Title: Voting Times
Document Date: Mar-95
Document Country: South Africa
Document Language: ???
IFES ID: CE01862



* D 5 5 F 5 D 2 D - 4 6 2 9 - 4 5 F 5 - 9 9 7 0 - E 7 7 2 A F 7 7 B E A 4 *

Voting Times

**IPHEPHANDABA
LESIHLE**

Ledlulisele nakwabanye Uma sewulifundile leliphephandaba ledlulisele komakhelwane, abangane noma abomdeni wakho.

Iphephandaba lomkhankaso wokhetho

Ushicilelo 1 March 1995

BHALISA MANJE

Ukhetho lwamadolobha noma izigodi luzoba yithuba lakho lokuthi usondeze umbuso weningi lapho wakhe khona nokuthi ubeke umbuso ezandleni zabantu.

Iawa ngamazwi ka Mongameli uNelson Mandela ngenkathi ekhuthaza bonke abakhele elase Ningizimu Afrika ukuthi bezwakalise amazwi abo ngokuthi bavotele abazobamela emikhandlwini yezigodi noma amadolobha angakubo ngomhla ka November 1.

"Okuyiyona nselele ebhekene nezwe lakithi namuhla eyokuthi sifeze lomkhankaso owaqalwa ngo April nyakenye," kwasho uMongameli uMandela ngenkathi ekhuluma emhlanganweni weziqongo zawohulumeni bezigodi.

Sekuvotetwani futhi manje?

Ohulumeni bezigodi abakhethwe ngokwenta ndo yeningi bayadingeka ukuze babhekane nezindaba ezichaphazela isigodi ngasinye.

Abesilisa nabesifazane abasebenza kanzima nabaqotho abavela kuyo yonke imiphakathi bayadingeka ukuze beseke izinda zawohulumeni bezigodi, ukuze izethembiso ze-RDP zifezeke kuyo yonke imiphakathi.

Kufanele benze isiqiniseko sokuthi lamasu ayaphumelela nokuthi imiphakathi iyahlomula kuwo.

Uzovotela bani?

Nguwe owaziyo ukuthi ngobani emiphakathini abantu abangasiza ukuthi kwenzekwe lokhu. Futhi nguwe owaziyo ukuthi ngobani abantu abakhathalele izidingo zomphakathi wangakini. Uma bezimisele ukumela ukhetho lokuba ngabaphathi besigodi sangakini, bavotele njengezithunywa ongazethemba.

Labaphathi bemikhandlu bazokuba:

- ngabaxhumanisi phakathi kwakho nohulumeni kazwelonke nowesifunda.
- yindlela yokujinisekisa ukuthi izinhlelo ze-RDP ziyafinvelela kithi
- yisiqinisekiso sokuthi umphakathi wangakini uyahlinzekwa ngezidingo ezifana nokwakhiwa kwezindlu, amanzi, ugesi, ukuthuthwa kukadoti, imitholampilo nezinkulisa

"Akumangalisi, uma sibheka lapho sisuka khona, ukuthi kukhona elikhulu igebe phakathi kweningi labantu bakithi kanye nemikhandlu yamadolobha," kwasho uMongameli uMandela.

Kodwa wagcizelela ukuthi izinto seziguqukile. Ngokubonisana, kwaqokwa imikhandlu yamadolobha yesikhashana emele abantu kangcono kuneyakuqala, ezophatha imiphakathi namadolobha kuze kufike isikhathi sokhetho futhi ilulungiselele lolukhetho.



Qiniseka ukuthi UBHALISE FUTHI UVOTE OKHETHWENI lwawohulumeni bamadolobha ngo-November. Lokhu kungayiguqula unomphelelo impilo yakho!

**Ngo April 1994 savotela
UHULUMENI KAZWELONKE
NOWEZIFUNDA.
Ngomhla ka 1 November
1995 sizovotela
OHULUMENI
BAMADOLOBHA.**

Okuqukethwe

- Indlela yokubhalisa Ikhasi 2
- Okushiwo abantu Ikhasi 3
- Incazelo mayelana nenqubo (ngokucacile) Ikhasi 4-5
- Yenza uHlelo loKwakhiwa kaBusha nokuThuthukiswa koMphakathi luyafezeka Ikhasi 6
- Indlela okuzovotwa ngayo, kanye nomyalezo ovela ku Archbishop Desmond Tutu Ikhasi 7
- Onokubathinta Ikhasi 8

INDLELA YOKUBHALISELA UKUVOTA

Thola ifomu lokubhalisela ukhetho namhlanje

Umhla ka 28 April wusuku lukugcina lokubhalisela ukuvota. Kodwa musa ukuphozisa amaseko. Bhalisa manje ukuze uqiniseke ukuthi nelakho igama liyezwakala.

Umkhandlu udinga igama nekheli lakho ukuze ube nesiqiniseko sokuthi igama lakho likhona ohleni lwabavoti ngenkathi ulungiselela lolukhetho.

Thatha ifomu lokuvota namhlanje ehovisi lomkhandlu wangakini, emtapweni wezincwadi, emtholampilo noma kwaMantshi.

Uma udinga eminye imininingwane mayelana nokhetho lwemikhandlu yezigodi, unga-shayela ucingo kulezinombolo ukuze uthole usizo:

EGoli	(011) 339-6141
EKapa	(0800) 221350
EPitoli:	
maphakathi	(012) 313-8211
enyakatho	(012) 549-2230
eningizimu	(012) 671-7211
EThekwini	(0800) 332-303
EBlomfontani	(051) 405-8852
EBhayi	(041) 506-3302
	<i>noma</i>
	(041) 506-3303

Ifomu lokubhalisela ukuvota



Zwakalisa izwi lakho okhethweni lwawohulumeni bezigodi. Qiniseka ukuthi unomazisi. Kungaba ngumazisi owejwayelekile wase Ningizimu Afrika, udompasi, noma kube yincwajana yokuvakasha (travel document) noma kube ngumazisi wase Transkei, Ciskei, Venda noma wase Bophuthatswana.

Kubhaliswa kanjani?

Impendulo: Ukuze ubhalise udinga ukuthi ugcwalise ifomu elaziwa ngokuthi yi-ER1 elitholakayo emahovisi omkhandlu wedolobha langakini, emahovisi kaMantshi noma emtapweni wezincwadi. Abanye abantu banokuwathola amafomu abo kwabakhankasela ukhetho abangena izindlu ngezindlu bebhalisa abantu, kanti abanye bangawathola ngeposi. Uma sewuligcwalisile lelifomu ungaliphindisela:

- ehovisi lomkhandlu wedolobha,
 - kulowo okhankasela ukhetho oilethe kuwe, noma
 - uliposele ekhelini elibhalwe kulo ifomu.
- Noma ngabe iyiphi indlela okhetha ukuliphindisela ngayo emuva, okubalulekile ukuthi uliphindisele ngokushesha.

Ngidingani ukuze ngibhalise?

Impendulo: Umuntu onelungelo lokuvota kufanele ukuthi abe neminyaka yobudala engengaphansi kuka-18 ngomhla wosuku lokuvota. Uma okwamanje uneminyaka engu 17, kodwa usuku lwakho lokuzalwa lufika ngaphambi komhla ka 1 November, kufanele ubhalisele ukuvota.

Kufanele ube ngumakhi wase Ningizimu Afrika onomazisi woqobo noma ube ngumuntu oschlala kuleli unomphela futshi onomazisi wase Ningizimu Afrika.

Umazisi iyona nto edingeka ngokubaluleke kakhulu uma ubhalisela ukuvota. Lomazisi angaba:

- umazisi owejwayelekile wase Ningizimu Afrika
- udompasi
- incwajana yokuvakasha (Travel document) noma umazisi wase Transkei, Ciskei, Venda noma wase Bophuthatswana.

Uma ungenawo umazisi, faka isicelo sokuthi ube nawo, manje. Uzonikezwa umazisi wesikhashana onenombolo. Ungayisebenzisa lenombolo ngenkathi ugcwalisa ifomu lokubhalisela ukuvota, kodwa uma sewuyovota uzodinga ukuthi ube nomazisi woqobo. Yenza konke okusemandleni akho ukuqinisekisa ukuthi uzobe usunawo umazisi singakafiki isikhathi sokhetho.

Ungalahlekelwa yithuba lakho lokuvota ngenxa nje yokuthi ungenawo umazisi.

Khumbula: Ivoti okhethweni lwemikhandlu yamadolobha yivoti lekhaya lakho nomphakathi wangakini!

Ngabe ivoti lami lizoba yimfihlo na?

Impendulo: Yebo. Isizathu sokugcwalisa igama nenombolo yomazisi wakho kulelifomu esokuthi kube nesiqiniseko sokuthi wonke umuntu uvota kanye kuphela esigodini ngasinye. Uma uyovota kudingeka uwuphathe umazisi wakho ukuze igama lakho liphawulwe ohleni lwabavoti. Uma lokhu sekwenziwe akekho omunye umuntu ongavota esebenzisa igama lakho.

Naphezu kokuthi lonke lolu lwazi luqekethwe ohleni lwabavoti, akukho muntu ozokwazi ukuthi uvotele bani. Ivoti lakho liseyimfihlo!

Khumbula: Bhalisela ukuvota noma ngabe useneminyaka engu-17 kodwa uzobe sewuneminyaka engu-18 ungakafiki umhla ka 1 November.

Intatheli nomthwebulizithombe bephephandaba i-Voting Times bake bakhuluma nabantu mayelana nokhetho luka November. Abanye base bevele bewagcwalisile amafomu, kanti abanye babengakawagcwalisi. Abaningi babengaqinisekanga mayelana nalolukhetho nangokuthi babhalise yini noma cha. Nakhu abakusho:

Bonke abantu base Ningizimu Afrika kufanele bavotele amazinga angcono empilo.



Uma ngivotile, ngizokwazi ukuthi izinkinga zami ngizozisa kubani.



Abantu kufanele babhalise, ngoba uma singavoti izinkinga zemiphakathi yethu ngeke zixazululwe. Kufanele sivotele abantu abawukhathalela ngeqiniso umphakathi.



Uma ngingavoti ngeke ngikwazi ukukhalaza ngezinkonzo ezingenelisi.



Sengibhalisile. Abantu kufanele babhalise ukuze bavote. Sizozithola lezindlu nemisebenzi esikuntulayo.



Ukwakhiwa kohla lwabavoti

Okhethweni luka November lawohlumeni bezigodi, sizodinga uhla lwabavoti.

Uhla lwabavoti ngumqulu okugcinwa kuwo yonke imininingwane yabavoti. Luqokatha amagama abo, amakheli abo kanye nezimbobo zomazisi babo.

Umpathi wohla lohlelo lwabavoti nguye obhekene nomsebenzi wokwakha uhla lwabavoti esigodini sangakini. Kodwa kungumthwalo wakho ukuqiniseka ukuthi igama lakho likhona ohleni lwabavoti. Uma sekuvahwe ukubhaliswa kwabavoti ngo May, umpathi wohla lwabavoti uzosakaza isimemezelo sokuthi mgeza mizoxlonga uhla lwabavoti oselwakhiwe oluzobe luginwe emahovisi omkhandlu wesigodi sangakini. Qiniseka ukuthi uzizela ngokwakho ukuyobona

ukuthi nembala igama lakho likhona. Use-
nako nokuthi uthathe amagama abangane
bakho nomakhelwane bakho uyobab-
hekela ukuthi amagama abo akhona yini
noma cha.

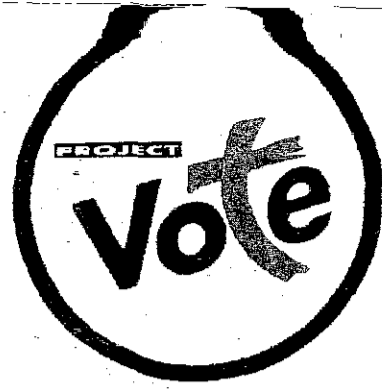
Ludingeke ngani uhla lwabavoti?

Zintathu izizathu ezenza ukuthi uhla lwabavoti ludingeke:

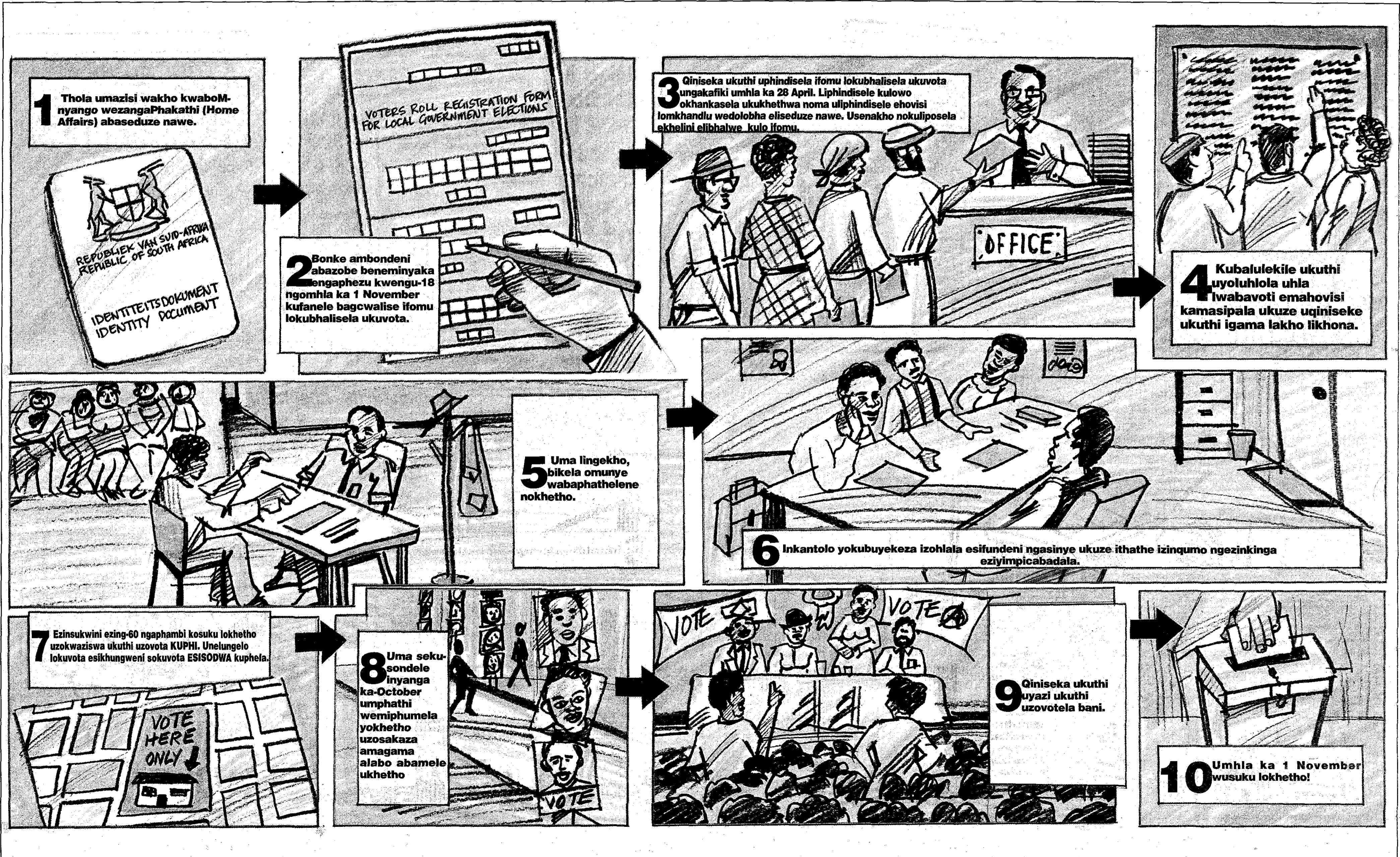
- Ukuvikela ukukhwabanisa okhethweni
- Ukwenza ukuthi bonke abanelungelo lokuvota bavote
- Ukusiza imikhandlu ukuthi ithathe izinqumo mayelana nobuningi beziyinqi zokuvota nobungako bezidingo zesiyingi ngasinye kanye namaphepha okuvota azodingeka okufancle agaywe.

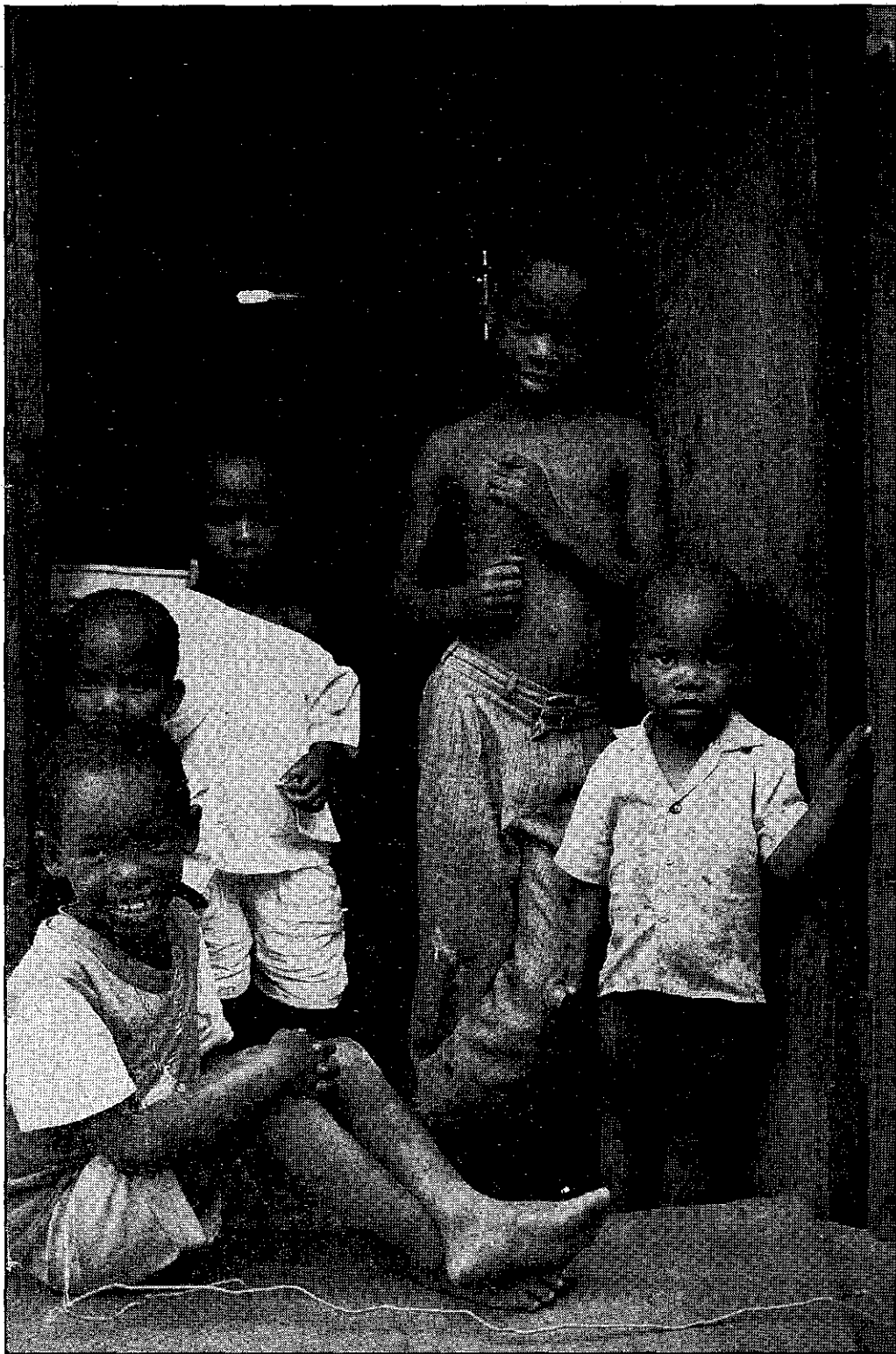


Uhla lwabavoti ngumqulu oqukethe amagama abo bonke abavoti. Qiniseka ukuthi NELAKHO igama likhona!



INDLELA OLUSEBANZA NGAYO





Nikeza abantwana bakho ikusasa eliqhakazile - qiniseka ukuthi uyavota okhethweni lwawohulumeni bamadolobha ngo November.

Izinkonzo esizinikezwayo azenelisi. Ukhetho luka November lun-gaqala ukusiguqula lesisimo.

Kudala iningi lemikhandlu yamadolobha yayin-gakhethwanga yizakhamizi eyayizilawula.

Kudala, iningi lemikhandlu yamadolobha yayin-gakhethwa ngokwentando yeningi futhi yayingaziphenduleli emiphakathini yayo. Kaningi yayingemukeleki emiphakathini, lokho okwaholela ekudutshweni kokuhlawulwa kwemali yerente neyeminye imisebenzi eyenzelwa umphakathi, ngenxa yokuthi lemisebenzi yayingenalusizo olutheni. Emalokishini amaningi akukho ngisho ompompi bodwa laba bamanzi, singasawuphathi ke ugesi nezindlela ezinotiyela. Izingane zethu zivame ukungenwa ngamagciwane nezifo ngoba kaningi zizithola zidlala eduze nodoti ongaqoqwa ngesikhathi esifanele abakwa masipala.

NgoHlelo loKwakhiwa kabusha nokuThuthukiswa koMphakathi (i-RDP) uHulumeni wethu uzimisele ukuthi abe kabusha umnotho wezwe lethu futhi athuthukise nezindawo esakhe kuzo ukuze sonke siphile kangcono.

Kodwa phela nayo i-RDP ingeke iphumelele ngaphandle kwabantu nezizinda ezindaweni lapho abantu behlala khona. Labo bantu amalungu emikhandlu yezigodi. Lezo zizinda ohulumeni bezigodi.

Ngomhla ka 1 November sizokhetha abesilisa nabesifazane abazobonisana nathi futhi basivumele ukuthi sibambe iqhaza nxashana kwenziwa izinqumo. Kudingeka siqiniseke ukuthi bazikhathalele ngempela izidingo zethu. Umphakathi ngamunye kufanele ube nenkundla ye-RDP (RDP Forum) ebandakanya namahlelo ezenkolo, amaqembu ezemidlalo, abamele imiphakathi (civics) kanye nohulumeni wedolobha. Kulapho esifanele ukuthi sibonisane khona ngekusasa lesigodi noma idolobha lethu.

Imbuzo ebuzwa abantu

Ngivumelekile yini ukuthi ngisize umuntu ongakwazi ukufunda nokubhala ngokuthi ngimgcwalisele ifomu lokubhalisela ukuvota?

Impendulo: Ungabagcwalisele ifomu u-ER1. Bacele ukuthi benze isiphambano endaweni obekufanele basayinde kuyo bese ubhala ekugcineni kwefomu ukuthi lowo muntu akakwazi ukufunda nokubhala.

Ngivumelekile yini ukuthi ngingavota uma ngisenesikweletu serente noma ezinye izimali zikamasipala?

Impendulo: Akukho muntu ozokwenqatshelwa ukuthi avote ngoba engakayihlawuli yonke irente nezinye izimali zikamasipala.

Ngingayisebenzisa incwadi yokuvakasha (passport) ngenkathi ngibhalisela ukuvota?

Impendulo: Cha, kwamukelwa kuphela umazisi woqobo, noma ngabe wawuthatha emazweni layeyizabelo ezizibusayo.

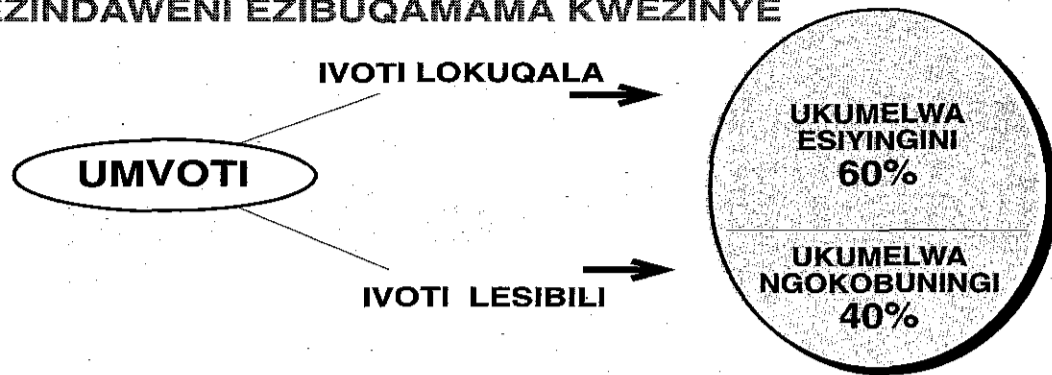
Kuvumelekile ukuvota kaningi?

Impendulo: Uma ngabe unemizi esezindaweni ezahlukene noma emadolobheni ehlekene, ungavota kuzo zonke lezozindawo. Kodwa uma unemizi eminingi endaweni eyodwa noma edolobheni elilodwa, ungavota kuleyondawo kuphela. Abanye abantu bazokwazi ukuthi bavote kaningi ngesiozathu sokuthi behlala endaweni ephansi komkhandlu othize kodwa babe benomhlaba noma behlawula irente endaweni engaphansi komunye umkhandlu.

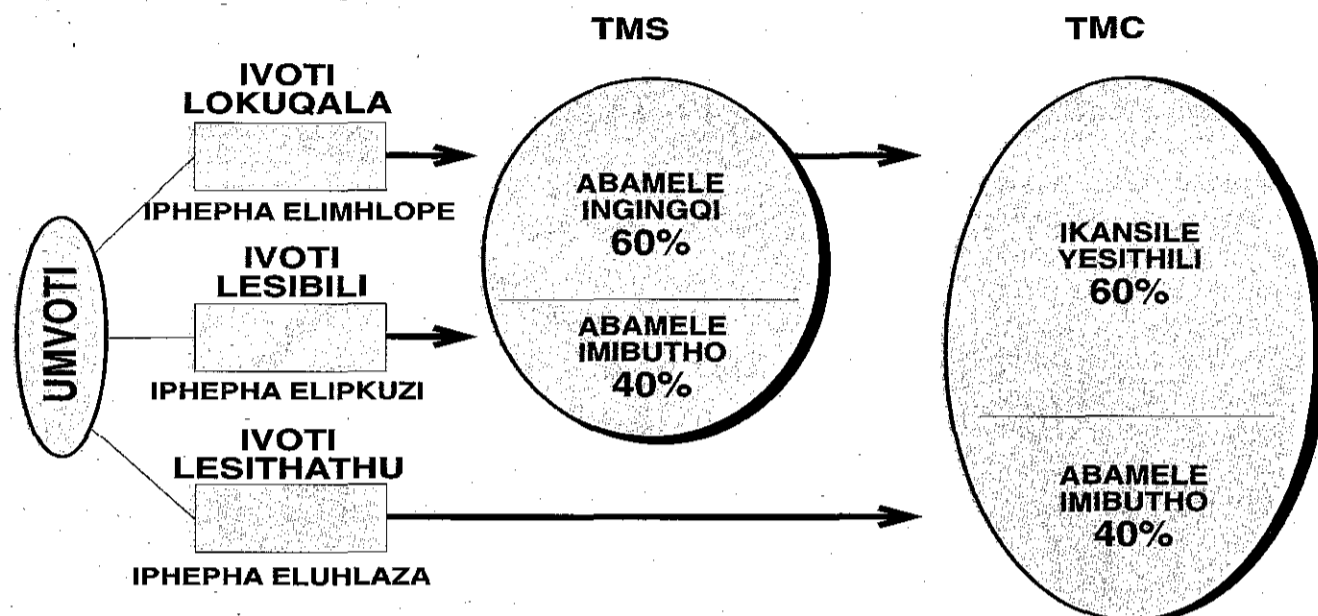
Khumbula ukuthi uthole umazisi wakho ehovisi laboMnyango wezangaPhakathi.

KUZOVOTWA KANJANI?

UKUVOTA EZINDAWENI EZIBUQAMAMA KWEZINYE



UKUVOTA EMADOLOBHENI AMAKHULU



GRAPHIC: Institute of Local Governance & Development

Uzovunyelwa ukuvota kangaki?

Umvoti ngamunye uzonikezwa okungenani amaphepha okuvota amabili, kuye ngokuthi uhla kuphi. Umvoti ngamunye uzonikezwa:

- iphepha lokuvota elinamagama nezimpawu zalabo abakhankasela ukukhethwa esiyingini ngasinye.
- iphepha lokuvota elinamagama nezimpawu zamaqembu ezombusazwe angenele ukhetho lomkhandlu wesigodi.

Idolobha elikhulu (metropolitan area) yidolobha elifana neTheku, iKapa noma noma iGoli, kanje, elinamalokishi amaningi nezindawo eziningi ezazingezabamhlophe bodwa. Uma uhlala edolobheni elikhulu uzonikezwa elinye futhi iphepha lokuvota. Kuleliphepha lokuvota uzovotela iqembu lezombusazwe ongathanda ukuthi likumele kuMkhandlu wesikhashana weDolobha eliKhu (Transitional Metropolitan Council), i-TMC.

Uma wakhe edolobheni elizimele lodwa noma wakhe emaphandleni, uzovota kabili: uzovota kube kanye uvotela ilungu lomkhandlu uphinde uvote kube kanye uvotela iqembu lezombusazwe. Ilungu lomkhandlu lizokumela esiyingini osakhele. Iqembu lezombusazwe lona lizokumela emkhandlwini wesigodi noma wedolobha.

Ngenkathi sivota, sizokwehlukani ngokwezinye. Esiyingini ngasinye kuzoba nesikhungo noma izikhungo zokuvota. Isiyingini ngasinye sizoba nabantu ababalelwa kwabangu 10 000, kodwa amanani azokwehluka czizingini ezahlukene.

Abantu besiyingini ngasinye bazokwehlukani ngokwezikhungo zokuvota. Ezindaweni zawoHulumeni bamaDolobha abaNyama kuzoba nabantu ababalelwa ku 2 500 esikhungweni ngasinye sokuvota ukuze abantu abangakaze bavote banikezwe ithuba elanele lokuvota nelokufinyelela ezikhungweni zokuvota. Kwezinye izindawo kuzoba nabantu ababalelwa ku 4 000 isikhungo ngasinye. Uzovunyelwa ukuthi uvote kuphela kuleso sikhungo owabelwe sona.

Umkhandlu wedolobha uzohlalanga-nisa izindlela ezimbili zokuvota:

- Ukumelwa ngokobuningi babantu. Lokhu kusho ukuthi amaqembu ezombusazwe azokwabelana ngezihlalo kuye ngokuthi iqembu ngalinye lizuze amavoti amangaki.
- Ukumelwa ngokobuningi baba-khethiwe. Lokhu kuzoya ngokuthi bangaki abakhankasela ukukhethwa esiyingini ngasinye.

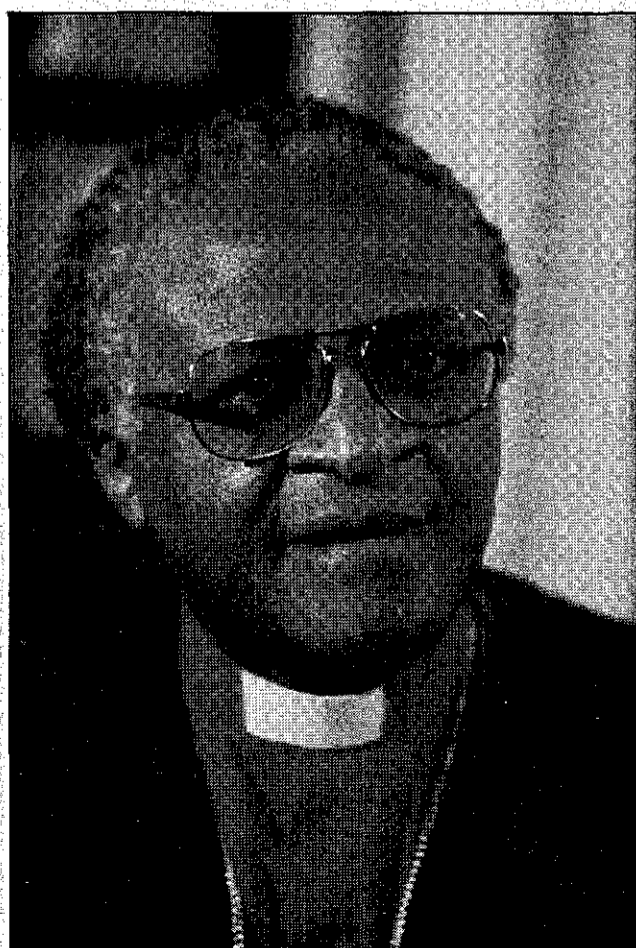
Izihlalo zizokwabiwa kanjani?

Akudingeki ukuthi bamele iqembu elithize lezombusazwe, kodwa kudingekile ukuthi bawuchazele umphakathi ukuthi bafunelani ukukhethwa.

Amalungu omkhandlu angamashumi ayisithupha kwayikhulu (60%) azoba

ngabameli beziyinye emkhandlwini wesigodi noma idolobha.

Amalungu amele iziyingi zoMkhandlu weDolobha eliKhu (Metropolitan Council Ward candidates) azoba yingxeny yamashumi ayisithupha amane ekhulwini (40%) emkhandlwini wesikhashana wedolobha elikhulu. Abakhethwe czizingini bazoba yingxeny yamashumi amane ekhulwini (60%) yamavoti alabo abavotele amalungu oMkhandlu wesikhashana weDolobha elikhulu.



Ligcine liphila iphupho

Umyalezo obhekiswe kubavoti ovela ku Archbishop Desmond Tutu

Ngesikhathi sokhetho lukaHulumeni kazwelonke nolwawohulumeni bezifunda, ngonyaka odlule, sonke sabamba ongezansi uma sibona lokho wonke umuntu amane wakuchaza ngokuthi yisimangaliso. Sekuyisikhathi ke manje sokuthi sithathe inyathelo elilandelayo lokuthi sisungule umbuso wentando yeningi ngokuthi sivotele izizinda zawohulumeni bamadolobha.

Leli yiqophelo lombuso okuyilona elisondelene kakhulu nabantu. Nginxusa izigidigidi zomphakathi ukuthi ziphume ngobuningi bazo, njengoba kwenzeka ngonyaka odlule, zizobhalisa futhi zivotele ohulumeni bezigodi abakhethwe ngokwentando yeningi. Loku kusho ukuthi uzovotela abantu abathandwa nguwe ukuthi bakumele kuhulumeni wesigodi.

Ngaphandle kwezizinda zawohulumeni bezigodi, uHulumeni ngeke akwazi ukwabela izigodi izimali ze-RDP. Ngaphandle kwawohulumeni bezigodi, izinkonzo eziningi ezenzelwa umphakathi ngeke zifezeke.

Kuyaqala ngqa ukuthi bonke abantu base Ningizimu Afrika bavotele ohulumeni bezigodi zangakubo kanye namalungu emikhandlu yamadolobha, ngakhoke malingasiphutheli lelithuba.

Bhalisela ukuvota manje ukuze uligcine liphila iphupho.

Bhalisela ukuvota ukuze sizikhethele eyethu imikhandlu yamadolobha kanye namakhansela angawethu

Abantu abazophatha ukhetho

Kulolukhetho akuzukufana nangesikhathi sokhetho lukazwelonke lapho kwakukhona iKhomishani eliZimele loKhetho (i-IEC). Ingxenyane enkulu yomsebenzi ophathelene nokhetho izoba semahlombe awohulumeni bezifunda nabamadolobha. Kuzovotwa ngomhla ka 1 November 1995 kuzo zonke izifunda, kanti nemithetho ephathelene nokhetho icishe ifane ezifundeni zonkana.

Ihovisi likaNgqongqoshe wezoMthethosisekelo nezeziFunda yilona elinamandla ka manquma mayelana nokhetho lwawohulumeni bezigodi.

Sekuqokwe iQembu likaZwelonke lamaShoshozela aBhekene noKhetho (national Elections Task Group) eliholwa ngu Dokotela uVan Syl Slabbert kanye nomnumzane uKhehla Shubane. Ngasinye sezifunda ezingu-9 kanye neminye yemiNyango ka Hulumeni inamabeli kuleliQembu lamaShoshozela Abhekene noKhetho. Umsebenzi omkhulu waleliqembu ngowokuxhumanisa, ukufakela izibuko, nokuyala uHulumeni.

Nansi indlela yokuxhumana nalo:

UDokt. Frederick Van Zyl Slabbert:

(011) 482-4850 noma (012) 341-5950/1/2,

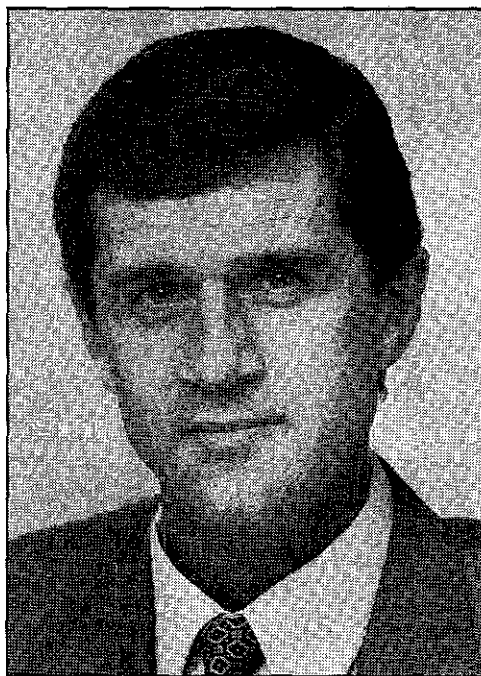
noma ubhalele kwa Private Bag X804, PRETORIA 0001.

UMnu. Khehla Shubane:

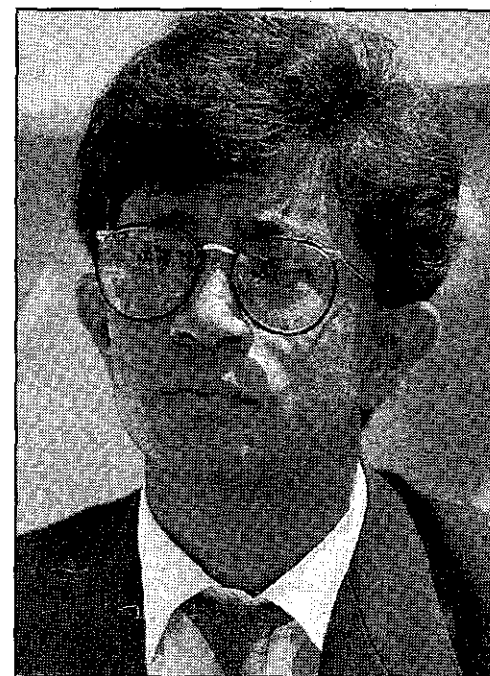
(011) 402-4308 noma (012) 341-5950/1/2,

noma ubhalele kwa Private Bag X804, PRETORIA 0001.

ONgqongqoshe ababhekene noKhetho lwawohulumeni bamaDolobha



UNgqongqoshe wezokuThuthukiswa koMthethosisekelo -Roelf Meyer



Isekela likaNgqongqoshe wezoku-Thuthukiswa koMthethosisekelo -Valli Moosa



Laba ngoNgqongqoshe eqophelweni lezifunda ababhekene nokhetho lwawohulumeni bezigodi noma amadolobha. Bona namaqembu abo bathwele emahlombe abo yonke imidanti ephathelene nokhetho esifundeni sangakini.

ENYAKATHO NTSHONALANGA
Mnu. D. Africa
Local Government and Housing
Private Bag X2099
MMABATHO
8681
Ucingo: (0140) 899-310
I-Fax: (0140) 842-675

ENYAKATHO KAPA
Mnu. O Dikgetsi
Local Government
P.O.Box 2618
KIMBERLEY
8300
Ucingo: (0531) 814-761 ext.211 noma 214
I-Fax: (0531) 814-475

ENTSHONALANGA KAPA
Mnu. P.J.Marais
Local Government and Development Planning
P.O.Box 648
CAPE TOWN
8000
Ucingo: (021) 483-5360/4466
I-Fax: (021) 483-3888

EMPUMALANGA KAPA
Mnu. M. Mamase
Housing and Local Government
Private Bag X0016
BISHO
5608
Ucingo: (0401) 956-4331
I-Fax: (0401) 952-148

EFLEYISTATA
Nksz. M.A. Motsumi
Local Government,
Management and Planning
Private Bag X20561
BLOEMFONTEIN
9300
Ucingo: (051) 405-5304
I-Fax: (051) 304-874

ENYAKATHO NTLASIFALI
Mnu. J. Dombo
Land, Housing and Local Government
Private Bag X9483
PIETERSBURG
0700
Ucingo: (0152) 291-1007
I-Fax: (0152) 295-2197

EMPUMALANGA NTLASIFALI
Mnu. C.J. Masilela
Local Government
P.O. Box 11273
NELSPRUIT
1200
Ucingo: (01311) 554-828/790
I-Fax: (01311) 554-887

EGAUTENG
Mnu. D. Mofokeng
Local Government
P.O.Box 62302
MARSHALLTOWN
2107
Ucingo: (011) 836-5060
I-Fax: (011) 836-7219

KWAZULU/NATALI
Mnu. P.M. Miller
Local Government and Housing
Private Bag 9037
PIETERMARITZBURG
3200
Ucingo: (0331) 423-452
I-Fax: (0331) 944-505