

Date Printed: 06/16/2009

JTS Box Number: IFES_75
Tab Number: 53
Document Title: Election Procedures
Document Date: 1978
Document Country: United States --
California
Document Language: English
IFES ID: CE02081



* 8 6 2 5 D 3 7 4 - 9 C D 4 - 4 F 6 E - B 8 9 7 - 3 8 E 4 D 1 8 4 0 E 0 7 *

Direct
Primary Election
June 6, 1978

General Election
November 7, 1978

SF
2.200.4
CA

election procedures



ELECTION PROCEDURES

DIRECT PRIMARY ELECTION

JUNE 6, 1978

AND

GENERAL ELECTION

NOVEMBER 7, 1978

PREPARED BY:

WM. H. CLINTON
REGISTRAR OF VOTERS
COUNTY OF SAN BERNARDINO
646 SIERRA WAY
SAN BERNARDINO, CA 92415
714/383-1811

DIRECT PRIMARY ELECTION

TUESDAY, JUNE 6, 1978

AND

GENERAL ELECTION

TUESDAY, NOVEMBER 7, 1978

TABLE OF CONTENTS

| | |
|---|----|
| Absentee Voting | 34 |
| Board of Supervisors, on General Ballot | 13 |
| Bond and Oath of Office | 14 |
| Campaign Statements, Filing | 33 |
| Calendar: | |
| Primary | 35 |
| General | 42 |
| Candidates: | |
| Campaign Statement Filing | 33 |
| Economic Interests, Statement of | 32 |
| Filing Fees | 7 |
| Name on Ballot | 24 |
| Nomination Papers, Circulating | 21 |
| Nomination Papers, Signing and Filing | 22 |
| Occupation Designation on Ballot | 24 |
| Procedures to get Name on Ballot | 19 |
| Statement, Education and Qualifications | 25 |
| Candidates Statement, Education and Qualifications. | 25 |
| County Central Committee: | |
| Apportionment for Primary | 4 |
| Organizational Meetings | 16 |
| Declaration of Intention: | |
| Judicial Office | 18 |
| Legislative Office | 17 |

| | |
|---|----|
| Definitions | 2 |
| Economic Interests, Statement of | 32 |
| Filing Fees | 7 |
| Judicial Office, Declaration of Intention | 18 |
| Legislative Office, Declaration of Intention | 17 |
| Maps, Political Subdivision | 52 |
| Nomination Papers: | |
| Candidate's Name | 24 |
| Circulating Requirements | 21 |
| Occupational Designation of Candidate | 24 |
| Signatures, Number Needed | 9 |
| Signing and Filing | 22 |
| Nonpartisan Offices, to be Filled | 4 |
| Office: | |
| Bond & Oath of Office | 14 |
| Election to Office | 13 |
| Eligibility to Offices | 10 |
| Filing Fees for Office | 7 |
| Nonpartisan to be Filled | 4 |
| Partisan to be filled | 3 |
| Terms of Office | 15 |
| Organizational Meetings of County Central Committees. | 16 |
| Partisan Offices to be Filled | 3 |
| Political Campaigns, Regulation of | 27 |
| Political Subdivisions of San Bernardino County | 1 |
| Registration by Political Subdivision | 46 |
| Regulations, Political Campaigns | 27 |
| Signs, Posting Political | 31 |
| Signatures, Number Needed for Nomination Papers | 9 |
| Terms of Office | 15 |

SAN BERNARDINO COUNTY COMPRISES OR IS A PART OF
THE FOLLOWING POLITICAL SUBDIVISIONS:

- 35th Congressional District
(Portions of San Bernardino and Los Angeles Counties)
- 36th Congressional District
(Portions of San Bernardino and Riverside Counties)
- 37th Congressional District
(Portions of San Bernardino and Riverside Counties)

- 16th State Senatorial District
(Portions of San Bernardino, Kern, Inyo and Los Angeles
Counties)
- 32nd State Senatorial District
(Portions of San Bernardino and Los Angeles Counties)
- 34th State Senatorial District
(Portions of San Bernardino and Riverside Counties)

- 34th Assembly District
(Portions of San Bernardino, Kern, Inyo and Los Angeles
Counties)
- 65th Assembly District
(Portions of San Bernardino and Los Angeles Counties)
- 66th Assembly District
(San Bernardino County only)
- 67th Assembly District
(Portions of San Bernardino and Riverside Counties)

- 4th Appellate District
(Imperial, Inyo, Orange, Riverside, San Bernardino,
San Diego)
- 2nd Equalization District
(Fresno, Imperial, Kern, Kings, Orange, Riverside,
San Bernardino, San Diego, Tulare)

- 5 Supervisorial Districts

- 12 Judicial Districts
(San Bernardino County Municipal Court District
contains 7 Divisions)

- 3 Municipal Water Districts

(Compiled January, 1978)

DEFINITIONS

1. CLERK - County Clerk, Registrar of Voters, City Clerk, or other officer or board charged with the duty of conducting any election. (Sec. 14, El. C.)
2. ELECTIONS OFFICIAL - A clerk or any person who is charged with the duty of conducting an election. (Sec. 15, El. C.)
3. ELECTOR - Any person who is a United States citizen 18 years of age or older and a resident of an election precinct at least 29 days prior to an election. (Sec. 17, El. C.)
4. VOTER - Any elector who is registered under the provisions of the Elections Code. (Sec. 18, El. C.)
5. GENERAL ELECTION - The election held throughout the state on the first Tuesday after the first Monday of November in each even-numbered year. (Sec. 20, El. C.)
6. DIRECT PRIMARY - The primary election held on the first Tuesday after the first Monday in June in each even-numbered year to nominate candidates to be voted for at the ensuing general election or to elect members of a party central committee. (Sec. 23, El.C.)
7. PARTY - A political party or organization which has qualified for participation in any primary election. (Sec. 35, El. C.)
8. PARTISAN OFFICE - An office for which a party may nominate a candidate. (Sec. 36, El. C.)
9. NONPARTISAN OFFICE - An office for which no party may nominate a candidate. Judicial, school, county and municipal offices are nonpartisan offices. (Sec. 37, El. C.)

PARTISAN OFFICES FOR WHICH CANDIDATES ARE TO BE NOMINATED
AT THE DIRECT PRIMARY ELECTION

TUESDAY, JUNE 6, 1978

| <u>Offices to be filled</u> | <u>Incumbent</u> |
|---|--------------------------|
| CONGRESSIONAL | |
| Representative in Congress (2 Year Term) | |
| 35th District | Jim Lloyd (D) |
| 36th District | George E. Brown, Jr. (D) |
| 37th District | Shirley N. Pettis (R) |
| STATE OFFICES (4 Year Term) | |
| Governor | Edmund G. Brown, Jr. (D) |
| Lieutenant Governor | Mervyn M. Dymally (D) |
| Secretary of State | March Fong Eu (D) |
| Controller | Kenneth Cory (D) |
| Treasurer | Jesse M. Unruh (D) |
| Attorney General | Evelle J. Younger (R) |
| State Board of Equalization 2nd District | Iris Sankey (D) |
| STATE LEGISLATURE | |
| State Senator (4 Year Term) | |
| 16th District | Walter W. Stiern (D) |
| 32nd District | Ruben S. Ayala (D) |
| 34th District | Robert B. Presley (D) |
| Member of Assembly (2 Year Term) | |
| 34th District | Larry Chimbole (D) |
| 65th District | Bill McVittie (D) |
| 66th District | Terry Goggin (D) |
| 67th District | Jerry Lewis (R) |

APPORTIONMENT OF COUNTY CENTRAL COMMITTEE
(2 Year Term)

| PARTY | TOTAL MEMBERS |
|--|---------------|
| DEMOCRATIC Seven members elected from each of the four Assembly Districts located wholly or partly in San Bernardino County. (Sec. 8820.1, E1. C.) | 28 |
| REPUBLICAN Elected by Supervisorial District (Sec. 9320, E1. C.) 1st=5 2nd=5 3rd=5 4th=3 5th=4 | 22 |
| AMERICAN INDEPENDENT To be computed after 1-4-78. (Sec. 9700, E1. C.) | |
| PEACE AND FREEDOM To be computed after 1-4-78. (Sec. 9762, E1. C.) | |

NONPARTISAN OFFICES FOR WHICH CANDIDATES ARE TO BE
ELECTED (OR NOMINATED) AT THE PRIMARY ELECTION

| <u>Offices to be filled</u> | JUDICIAL | <u>Incumbent</u> |
|---|----------|--------------------------|
| Judge of the Superior Court (6 Year Term) | | |
| Office No. 1 | | Thomas M. Haldorsen |
| Office No. 2 | | Don A. Turner |
| Office No. 3 | | Patrick J. Morris |
| Office No. 4 | | John F. Ingro |
| Office No. 5 | | William Pitt Hyde |
| Office No. 6 | | Matthew M. Kearney |
| Office No. 7 | | Donald R. Egan |
| Judge of the San Bernardino County Municipal Court District (6 Year Term) | | |
| Central Division (San Bernardino) | | Donald E. Van Luven, Jr. |
| Victorville Division | | William J. Johnstone |
| West Valley Division (Ontario-Upland) | | |
| Office No. 1 | | David C. Merriam |
| Office No. 2 | | Martin A. Hildreth |
| Judge of the Justice Court (Short Term - ending January 1983) | | |
| Cucamonga-Etiwanda Judicial District | | D. Larry Thorne |
| Needles-Calzona Judicial District | | Jack I. Massey |
| Trona Judicial District | | Edward L. Heap |

Offices to be filled

Incumbent

Constables - Judicial Districts (6 Year Term)

| | |
|--------------------|----------------------|
| Bear Valley | Christopher D. Smith |
| Bloomington | Eugene A. Bobeng |
| Colton | Pascual S. Oliva |
| Crest Forest | William D. Treadwell |
| Cucamonga-Etiwanda | Robert J. Plamondon |
| Highland | Barbara Janssen |
| Mission | Gordon C. Beer |
| Needles-Calzona | Russell D. Weart |
| Trona | Fidel Ruiz |
| Twentynine Palms | Louis O. Dugas |
| Yucaipa | James Martines |

SCHOOL (4 Year Term)

| | |
|--------------------------------------|--------------|
| Superintendent of Public Instruction | Wilson Riles |
| County Superintendent of Schools | Roy C Hill |

COUNTY (4 Year Term)

| | |
|-------------------------------------|--------------------|
| Supervisor - 2nd District | Joseph Kamansky |
| Supervisor - 4th District | Robert O. Townsend |
| Assessor | Robert J. Herbin |
| Auditor | John H. Bulmer |
| County Clerk - Recorder | V. Dennis Wardle |
| District Attorney | James M. Cramer |
| Public Administrator and Coroner | Bill Hill |
| Sheriff | Frank Bland |
| Treasurer - Tax Collector | John A. Gartner |

Offices to be filled

Incumbent

DISTRICT (4 Year Term)

Big Bear Municipal Water District

| | |
|-------------------------|-------------------------|
| Director - Division I | Duane R. Boyer |
| Director - Division II | James W. B. Riffenburgh |
| Director - Division III | Sheridan O. Conklin |

Chino Basin Municipal Water District

| | |
|-------------------------|--------------------|
| Director - Division II | George A. Borba |
| Director - Division III | Ernest L. Keechler |
| Director - Division IV | John G. Gilday |

San Bernardino Valley Municipal Water District

| | |
|-------------------------|--------------------|
| Director - Division III | William R. Leonard |
| Director - Division IV | Lloyd D. Yount |
| Director - Division V | James A. Holden |

Directors of other special districts, which by law may pass resolutions requesting consolidation with the primary.

(The information as to offices and incumbents is correct as of date of printing.)

FILING FEES

(Secs. 6552, 6554, 6555, Elec. C.)

| <u>OFFICE</u> | <u>AMOUNT</u> | <u>EXPLANATION</u> | <u>SIGNATURES IN /a/ LIEU OF FILING FEE</u> |
|---|---------------|--------------------|---|
| Representative in Congress | \$575.00 | 1% Annual Salary | 3,000 |
| State Senator | 255.55 | 1% " " | 3,000 |
| State Assembly | 255.55 | 1% " " | 1,500 |
| Governor | 982.00 | 2% " " | 10,000 |
| Lieutenant Governor | 850.00 | 2% " " | 10,000 |
| Secretary of State | 850.00 | 2% " " | 10,000 |
| Controller | 850.00 | 2% " " | 10,000 |
| State Treasurer | 850.00 | 2% " " | 10,000 |
| Attorney General | 950.00 | 2% " " | 10,000 |
| Superintendent of Public Instruction | 850.00 | 2% " " | 10,000 |
| State Board of Equalization | 380.00 | 1% " " | 1,520 |
| Judge of the Superior Court | 491.66 | 1% " " | 1,967 |
| Judge of the Municipal Court | 452.35 | 1% " " | 1,810 |
| Judge, Cucamonga-Etiwanda Justice Court | 216.12 | 1% " " | 865 |
| Judge, Needles-Calzona Justice Court | 186.60 | 1% " " | 275 |
| Judge, Trona Justice Court | 32.75 | 1% " " | 131 |
| Member of the Board of Supervisors | 496.88 | 2% " " | 1,988 |
| Director, Municipal Water District | 10.00 | | 40 |
| County Central Committee | No Fee | | |

County Offices as listed below:

NOTE: If salaries are changed before filing date, the schedule below may not apply.

| | | | |
|----------------------------------|--------|--------|-------|
| Assessor | 702.80 | 2% " " | 2,812 |
| Auditor | 711.42 | 2% " " | 2,846 |
| County Clerk - Recorder | 664.50 | 2% " " | 2,658 |
| County Superintendent of Schools | 700.00 | 2% " " | 2,800 |
| District Attorney | 450.99 | 1% " " | 1,804 |
| Public Administrator and Coroner | 697.60 | 2% " " | 2,791 |
| Sheriff | 765.34 | 2% " " | 3,062 |
| Treasurer - Tax Collector | 642.78 | 2% " " | 2,572 |

FILING FEES (Continued)

| <u>OFFICE</u> | <u>AMOUNT</u> | <u>EXPLANATION</u> | <u>SIGNATURES IN /a/ LIEU OF FILING FEE</u> |
|--------------------------------|---------------|--------------------|---|
| CONSTABLES - Judicial District | | | |
| Bear Valley | \$265.20 | 2% Annual Salary | 451 |
| Bloomington | 265.20 | 2% " " | 625 |
| Colton | 265.20 | 2% " " | 1,062 |
| Crest Forest | 265.20 | 2% " " | 608 |
| Cucamonga-Etiwanda | 265.20 | 2% " " | 1,062 |
| Highland | 265.20 | 2% " " | 547 |
| Mission | 265.20 | 2% " " | 527 |
| Needles-Calzona | 265.20 | 2% " " | 275 |
| Trona | 110.02 | 2% " " | 266 |
| Twenty-nine Palms | 265.20 | 2% " " | 1,062 |
| Yucaipa | 265.20 | 2% " " | 1,062 |

/a/ Partisan Offices - signers must be registered voters of the political subdivision, and must be registered as affiliated with the same party as the candidate.

Nonpartisan Offices - signers must be registered voters of the political subdivision.

American Independent-Peace & Freedom Parties - Candidates may submit a petition containing signatures of 10% of the registered voters of that party in the district, or 150 signatures, whichever is less.

The Registrar of Voters cannot issue any nomination papers until the filing fees are paid. The fees for county, judicial or district offices are paid to the Registrar of Voters; personal checks are acceptable. The fees required to be paid to the Secretary of State must be paid by Cashier's or Certified Check. Such fees are delivered to the Registrar of Voters, when the papers are issued, for later transmittal to the Secretary of State.

NUMBER OF SIGNATURES OF SPONSORS REQUIRED
(Sec. 6495, E1. C.)

| <u>OFFICE</u> | <u>MINIMUM</u> | <u>MAXIMUM</u> |
|------------------------------------|----------------|----------------|
| State Offices (Except as below) | 65 | 100 |
| Representative in U. S. Congress | 40 | 60 |
| State Senator | 40 | 60 |
| State Assembly | 40 | 60 |
| Board of Equalization | 40 | 60 |
| Judge of the Superior Court | 20 | 30 |
| Judge of the Municipal Court | 20 | 30 |
| Judge of the Justice Court | 20 | 30 |
| Constable | 20 | 30 |
| Member, Board of Supervisors | 20 | 30 |
| County Offices | 20 | 30 |
| County Central Committee | 20 | 30 |
| Director, Municipal Water District | 20 | 30 |

In all cases, it is suggested that more than the minimum number of signatures be obtained so that in case any are marked "Not Sufficient," there will be enough "Sufficient" signatures remaining to validate the petition.

NOTE: When any political party has less than 50 voters in the political subdivision in which the election is to be held, the number of signatures required is equal to 1/10 the number of voters in the party. When there are fewer than 150 voters in the political subdivision in which the election is to be held, the number of signatures required is not less than 10 nor more than 20.
(Sec. 6495, E1. C.)

ELIGIBILITY TO OFFICES

Offices in General

Unless otherwise specifically provided, no person is eligible to be elected or appointed to an elective office unless that person is a registered voter and otherwise qualified to vote for that office. (Sec. 75, El. C.)

Partisan Office

Any candidate for a partisan office or for membership on a County Central Committee shall have been registered as affiliated with the political party the nomination of which he seeks, continuously for not less than three months or for as long as he has been eligible to register to vote in the State immediately prior to the time of filing his declaration of candidacy and shall not have been registered as affiliated with a political party other than that party within 12 months immediately preceding such filing.

(Sec. 6401, El. C.)

Representative in Congress

No person shall be a Representative who shall not have attained to the age of twenty-five years, and been seven years a citizen of the United States, and who shall not, when elected, be an inhabitant of that State in which he shall be chosen.

(Art. I, Sec. 2, Para. 2, U.S. Const.)

Governor

A candidate for Governor shall be an elector who has been a citizen of the United States and a resident of this State for 5 years immediately preceding his election.

(Art. V, Sec. 2, Calif. Const.)

Lieutenant Governor

A candidate for Lieutenant Governor shall have the same qualifications as the Governor.

(Art. V, Sec. 9, Calif. Const.)

Attorney General

No person shall be eligible to the office of Attorney General unless he shall have been admitted to practice before the Supreme Court of the state for a period of at least five years immediately preceding his election or appointment to such office.

(Sec. 12503, Gov. C.)

Secretary of State - Controller - Treasurer

No specific requirements other than those required to run for a partisan office.

Board of Equalization

A person shall not be a member of the State Board of Equalization unless he has been an inhabitant of the district for which he is chosen for the one year preceding his election or appointment and unless he is an inhabitant of the district for which he is chosen during his incumbency. (Sec. 15601, Gov. C.)

State Senator and Assemblyman

A person is ineligible to be a member of the Legislature unless the person is an elector and has been a resident of the legislative district for one year, and a citizen of the United States and a resident of California for three years, immediately preceding the election. (Art. IV, Sec. 2c, Calif. Const.)

County Central Committee

A person shall not be eligible for appointment or election to a committee who is not registered as affiliated with their party at the time of his appointment or election. (Secs. 8827, 9327, 9704, E1. C.)

Judge of the Superior Court

A person is ineligible to be a judge of a superior court unless for 10 years immediately preceding selection, the person has been a member of the State Bar or served as a judge of a court of record in this State. (Art. VI, Sec. 15, Calif. Const.)

Judge of the Municipal Court

A person is ineligible to be a judge of a municipal court unless for 5 years immediately preceding selection, the person has been a member of the State Bar or served as a judge of a court of record in this State. (Art. VI, Sec. 15, Calif. Const.)
He shall also be a resident eligible to vote in the judicial district in which he is elected for a period of at least 54 days prior to the date of his election. (Sec. 71140, Gov. C.)

Judge of the Justice Court

No person is eligible to the office of judge of a justice court unless at the time of his selection, he is an attorney admitted to practice before the State Supreme Court and a resident of the County. (Secs. 71601, 71701, Gov. C.)

Constable of the Justice Court

Constables of a justice court shall be a resident eligible to vote in the judicial district in which they are elected for a period of at least 54 days prior to the date of their election. (Sec. 71140, Gov. C.)

County or District Office

A person is not eligible to a county or district office, unless at the time of his election or appointment he is of the age of eighteen years or over, a citizen of the State and an elector of the county or district in which the duties of the office are to be exercised. (Sec. 24001, Gov. C.)

Board of Supervisors

A member of the Board of Supervisors shall have been an elector of the district which he represents for at least 30 days immediately preceding the time he files his nomination papers, and reside in the district during his incumbency. (Sec. 25041, Gov. C.)
(Johnson vs. Hamilton - 15 C3d 461 (1975).

Auditor

No person is eligible to the office of county auditor unless: he possesses a valid certificate issued by the California State Board of Accountancy under the provisions of Chapter 1, Division 3 of the Business and Professions Code showing him to be, and a permit authorizing him to practice as, a certified public accountant or as a public accountant; or he possesses a valid certificate or diploma of graduation from a school of accountancy; or he has served as county auditor or as deputy county auditor for a continuous period of not less than three years. (Sec. 26945, Gov. C.)

District Attorney

A person is not eligible to the office of district attorney unless he has been admitted to practice in the Supreme Court of the State. (Sec. 24002, Gov. C.)

County Superintendent of Schools

All county superintendents of schools in counties within class two (2) shall possess a valid certification document authorizing administrative services. (Sec. 760, Ed. C.)

Municipal Water District

A director must be a resident of the division for which he is elected.
(Sec. 71501, Water C.)

ELECTION TO OFFICE

PARTISAN OFFICE

For a partisan office, the candidate who receives the highest number of votes at the Primary Election among the candidates of their political party becomes that party's nominee at the General Election. That person's name, along with the names of nominees of the other parties, will appear on the General Election ballot. (Sec. 6610, E1. C.)

(Exception: Members of the County Central Committees are elected at the Primary Election.) (Sec. 6614.5. E1 C.)

NONPARTISAN OFFICE

A candidate for a nonpartisan office is elected at the Primary Election if that person receives a majority of the votes cast for that office. If no candidate for the office receives a majority of the votes cast, there will be a run-off contest at the November General Election between the two candidates with the highest votes at the Primary. (Secs. 6611, 6612, E1. C.)

BOARD OF SUPERVISORS

In the event there are only two candidates for any one office of a county supervisor, such office shall not be placed on the ballot for the Primary Election, but such office shall be placed on the ballot for, and voted for at the November General Election. (Sec. 6614.1. E1. C.)

BOND AND OATH OF OFFICE

All elected nonpartisan candidates must take, subscribe and file an oath of office with the County Clerk at any time before the commencement of the term of office. The oath may be taken before any officer authorized to administer oaths.

They must also submit a bond (if the duties of their office so require) to the Superior Court for approval before being recorded in the office of the County Recorder and then filed and kept in the office of the County Clerk. All successful nonpartisan candidates are required to check with the Central Services Department, 1111 East Mill Street, Building 2, Room 2080, San Bernardino, CA 92415, Telephone: 383-2265, regarding their bond.

The bond must be recorded and filed in the proper office within the time prescribed for filing the oath.

TERMS OF OFFICE

Representative in Congress

Two (2) years commencing at 12:00 o'clock noon on January 3, 1979.
(U.S. Const. Amend. XX, Sec. 1)

State Offices

Four (4) years commencing January 8, 1979. (Art. 5, Secs. 2, 11, Art. 9, Sec. 2,
Calif. Const.)

State Senator

Four (4) years commencing December 4, 1978. (Art. 4, Sec. 2a, Calif. Const.)

Member of Assembly

Two (2) years commencing December 4, 1978. (Art. 4, Sec. 2a, Calif. Const.)

Judicial Offices

Six (6) years commencing January 8, 1979. (Art. 6, Sec. 16c, Calif. Const.,
Secs. 71145, 71602, Gov. C.)

Board of Supervisors

Four (4) years commencing at 12:00 o'clock noon on December 4, 1978.
(Co. Charter, Art. I, Sec. 2)

The Board shall elect one of its members as Chairman of the Board after Noon on
January 8, 1979, for a two (2) year term. (Co. Charter, Art. I, Sec. 4)

County Offices

Four (4) years, commencing at noon, January 8, 1979.
(Co. Charter, Art. II, Sec. 3)

Municipal Water Districts

Four (4) years commencing at 12:00 o'clock noon, on January 8, 1979.
(Sec. 71253, Water C., Sec. 24200, Gov. C.)

County Central Committee

Two (2) years commencing at the time of the party's organizational meeting.

ORGANIZATIONAL MEETINGS OF
COUNTY CENTRAL COMMITTEES

- DEMOCRATIC PARTY
JULY 10, 1978
or
JANUARY 15, 1979
- Each committee shall meet upon call, which shall be given by the Registrar of Voters, and in quarters to be arranged or provided for by the Registrar of Voters, on the second Monday after the first day in January (January 15, 1979), following the direct primary election, unless the committee decides by majority vote to meet on the second Monday after the first day in July (July 10, 1978), following the direct primary election and files a written memorandum of such decision with the Registrar of Voters before direct primary election. Any decision to meet in July shall cause later meetings to occur on the same day. (Sec. 8920, E1. C.)
- REPUBLICAN PARTY
JANUARY 8, 1979
- Each committee shall meet upon call which shall be given by the Registrar of Voters and in quarters to be arranged or provided for by the Registrar of Voters on the first Monday after the first day in January following the direct primary election. (Sec. 9420, E1. C.)
- AMERICAN
INDEPENDENT PARTY
PEACE AND FREEDOM
PARTY
JULY 11, 1978
- Each committee shall meet upon call, which shall be given by the Registrar of Voters, and in quarters to be arranged or provided for by the Registrar of Voters on the second Tuesday in July following the direct primary election. (Secs. 9730, 9840, E1. C.)

DECLARATION OF INTENTION
LEGISLATIVE OFFICE

Each candidate for a party nomination for the office of State Senator or Member of the Assembly at the Direct Primary Election, shall file a written and signed declaration of his intention to become a candidate for his party's nomination for that office. The declaration of intention shall be filed with either the Secretary of State or the Registrar of Voters of the County in which the candidate is a resident.

The declaration of intention shall be filed on a form to be supplied by the Registrar of Voters not earlier than January 30, nor later than 5:00 p.m., February 8, 1978.

If the incumbent fails to file a declaration of intention by February 8, 1978, persons other than the incumbent may file declarations of intention no later than 5:00 p.m., February 13, 1978.

If the incumbent legislator files a Declaration of Intention, but for any reason fails to qualify for nomination for the office by March 10, 1978, an additional five days shall be allowed for the filing of nomination papers for the office, and any person, if otherwise qualified, may file nomination papers for the office until 5:00 p.m., March 15, 1978. No Declaration of Intention is required in this event. (Sec. 25500, E1. C.)

Filing fee required at time of filing declaration of intention.
(Sec. 6553, E1. C.)

JUDICIAL OFFICE

A candidate for Judge of the Superior Court, shall file in duplicate with the Registrar of Voters not earlier than January 30, nor later than February 8, 1978, a written and signed declaration of his intention to become a candidate for that office and shall state for which of the numerically designated offices he intends to become a candidate.

This duplicate declaration, left with the Registrar of Voters, is transmitted to the Secretary of State.

A candidate for Judge of the Municipal Court or Justice Court shall file in duplicate with the Registrar of Voters not earlier than January 30, nor later than February 8, 1978, a written and signed declaration of his intention to become a candidate for that office and shall state for which of the numerically designated offices he intends to become a candidate. The Municipal or Justice Court declarations are not transmitted to the Secretary of State, but remain on file in the Registrar of Voters' Office.

He must also file his nomination papers in the same manner and times as other candidates for office. If he neglects to file his declaration of intention within the above specified dates, the Registrar of Voters cannot accept any declarations, or nomination papers for filing. (Sec. 25301, El. C.)

In any county or any judicial district in which only the incumbent has filed nomination papers for the Office of Superior Court Judge, Municipal Court Judge or Justice Court Judge, his name shall not appear on the ballot unless there is filed with the Registrar of Voters, within 20 days after the final date for filing nomination papers for the office, a petition indicating that a write-in campaign will be conducted for the office and signed by 100 registered voters qualified to vote with respect to the office.

If a petition indicating that a write-in campaign will be conducted for the office at the General Election, signed by 100 registered voters qualified to vote with respect to the office, is filed with the Registrar of Voters not less than 59 days before the General Election, the name of the incumbent shall be placed on the General Election ballot if it has not appeared on the Direct Primary Election ballot.

If, in conformity with this section, the name of the incumbent does not appear either on the Primary ballot or General Election ballot, the Registrar of Voters, on the day of the General Election, shall declare the incumbent reelected. (Sec. 25304, El. C.)

If the incumbent Judge of Superior, Municipal or Justice Court has filed his declaration of intention and dies on or before March 10, 1978, or for any reason fails to submit required nomination papers by said date, an extended 5-day filing period is made available. Any person, if otherwise qualified, may file for office notwithstanding his nonfiling of declaration of intention. (Sec. 25305, El. C.)

PROCEDURE NECESSARY FOR CANDIDATES
TO GET THEIR NAMES ON BALLOT

Candidates must obtain nomination forms from the Registrar of Voters, 646 Sierra Way, San Bernardino, CA 92415. At the time of applying for the forms, the candidate must state the office for which he is running and must pay his filing fee. Filing fees for nonpartisan offices may be made by personal check, if desired, in which case the payee is County Treasurer or County of San Bernardino. Filing fees for partisan office must be made by Cashier's or Certified Check, made payable to Secretary of State. Filing fees are not refunded in the event the candidate fails to qualify as a candidate. Only "Official Filing Forms," issued by the Registrar of Voters, containing the candidate's name and office for which he is running, may be used for filing. (Sec. 6551, El. C.)

It is suggested that prospective candidates for the coming election obtain the necessary forms from the Registrar of Voters as soon as possible on or after the first day to circulate and file, February 13, 1978, and that the papers be filed as soon as completed so that any irregularities may be corrected before the last filing date. If the papers are found "Not Sufficient," no additions or corrections can be made after 5:00 p.m., March 10, 1978. The Registrar of Voters' Office will assist any candidate in the proper preparation of his nomination papers.

Instead of paying a filing fee, a candidate may circulate petitions to obtain signatures "in lieu" of a filing fee. Forms for circulating may be obtained from the Registrar of Voters' Office, up to 45 days (January 2, 1978) prior to the first day to circulate nomination papers. Petitions shall be filed at least 15 days (February 23, 1978) prior to the close of the nomination period. Nomination papers are issued provisionally, subject to checking the validity of the signatures. In the event the number of valid signatures falls below the number required, the Registrar of Voters shall notify the candidate. The candidate shall then, prior to the close of the nomination period, either submit a supplemental petition, or pay a pro rata portion of the filing fee, to cover the deficiency. (Sec. 6555, El. C.)

*Party Affiliation of Candidate - Partisan Office

No declaration of candidacy for a partisan office or for membership on a County Central Committee shall be filed, (1) unless at the time of presentation of the declaration and continuously for not less than three months immediately prior to that time, or for as long as he has been eligible to register to vote in the state, the candidate is shown by his affidavit of registration to be affiliated with the political party the nomination of which he seeks, and (2) the candidate has not been registered as affiliated with a qualified political party other than that political party the nomination of which he seeks within 12 months immediately prior to the filing of the declaration.

The Registrar of Voters shall attach a certificate to the declaration of candidacy showing the date on which the candidate registered as intending to affiliate with the political party the nomination of which he seeks, and indicating that the candidate has not been affiliated with any other qualified political party for the 12-month period immediately preceding the filing of the declaration. (Sec. 6401, El. C.)

*("Political party" means a party qualified for participation in the Direct Primary Election. (Sec. 35, El. C.))

*(A candidate meeting the 3-month registration requirement, but during the 12-month period was registered as "declines to state," is eligible to file - - providing he was not at another time during the 12-month period registered as affiliated with a party other than the party the nomination of which he seeks. Ops. Legis. Counsel, 5-26-61.)

- - - - -

CIRCULATING NOMINATION PAPERS

A candidate is permitted to circulate and obtain signers for his own candidacy; or he may appoint one or more circulators to serve within the district or political subdivision in which the candidate is to be voted upon to secure the signatures on his nomination paper. (Secs. 53, 6497, 6499, 6860, 6861, E1. C.)

All circulators must be appointed in writing and must be registered voters in order to make the signatures valid. (Sec. 6498, E1. C.)

A Registrar of Voters or a Deputy Registrar of Voters shall not be appointed as circulators, and circulators shall not obtain signatures within 100 feet of any election booth or polling place. (Sec. 6862, E1. C.)

Signers of nomination papers for Partisan Office must be of the same political party as that for which the candidate seeks nomination in order that the signatures be considered sufficient. (Sec. 6501, E1. C.)

When the office is a Nonpartisan Office, circulators are appointed in the same manner as for Partisan Office, except that the political qualification of signers does not apply and must not be stated in any nomination paper. (Sec. 6401.5, E1. C.)

All Certificates of Appointment of circulators must be filed in the Registrar of Voters' Office, in the county in which the circulator resides, at or before the time the nomination papers are left for filing. March 10, 1978, is the last day upon which this can be done for the Direct Primary.

- - - - -

SIGNING AND FILING OF
NOMINATION PAPERS

All nomination papers for the Direct Primary must be left with the Registrar of Voters' Office not later than March 10, 1978, for examination and filing, or for examination and certification and forwarding to the Secretary of State, as the case may be. This closing date, the last day to file, is on a Friday and the office of the Registrar of Voters will close promptly at 5:00 p.m., after which no nomination papers will be received.
(Sec. 6490, El. C.)

Nomination papers for a Nonpartisan Office must be signed by voters residing within the district in which the duties of the office are to be exercised. (Sec. 6501, El. C.)

Nomination papers for a Partisan Office can only be signed by voters residing within the political subdivision and who are registered as being affiliated with the same political party in which such nomination is proposed. (Sec. 6501, El. C.)

Each signer of a nomination paper can sign only as many certificates as there are places to be filled for such office. No more signers shall be secured for any candidate than the maximum, nor less than the minimum, required for the office. (Secs. 6495, 6502, El. C.)

A person signing a nomination paper should sign his first name, middle initial and last name. Married women must sign their given name, and not that of their husbands.

Each voter must sign and print his name on the nomination paper in the presence of the circulator, write in the place of residence, giving street and residence number, if any. Ditto marks cannot be used for residence or cities. It is important that the signer, himself, write in the above requirements. Signers are cautioned to give their residence, and not their business or mailing address on nomination papers.

When the desired number of signatures have been obtained, the circulator must swear to the affidavit appearing at the end of each section of the nomination paper, indicating the dates between which all signatures were obtained, and return all sections to the candidate, to be left by him with the Registrar of Voters in the county in which the circulator resides for examination or certification and filing.

All nomination papers for the Direct Primary shall be left for examination or filed in the office of the Registrar of Voters not later than 5:00 p.m., March 10, 1978, those which are to be filed in the office of the Secretary of State will be transmitted by the Registrar of Voters within 5 days after being left for examination.
(Secs. 6507, El. C.)

The Registrar of Voters will not accept for filing any declaration or nomination papers unless all blanks therein are filled and he will mark as "Not Sufficient" any signature that does not appear in the same handwriting as appears on the affidavit of registration in his office or in which the declaration of party affiliation is not in accordance with the declaration of party affiliation in such affidavit of registration. (Secs. 6497, 6501, E1. C.)

The Registrar of Voters' Office is not responsible for an excess or lack of publicity. All filing information is given to the newspapers when the reporters call. It is suggested that candidates submit typewritten lists of signers and circulators with their nomination papers.

CANDIDATE'S NAME AND OCCUPATIONAL DESIGNATION

The candidate's name will be printed on the ballot exactly as it appears on the Declaration of Candidacy. Nicknames of candidates are permitted on the ballot, provided the candidate has declared his or her candidacy under such name. (A.G. 50-87, May 27, 1950)

If a candidate changes his or her name within one year of any election, the new name shall not appear upon the ballot, unless the change was made by marriage or decree of any court of competent jurisdiction. (Sec. 10209, E1. C.)

The candidate may, at his option, have one of the following designations appear under his name on the ballot:

- (1) Words designating the elective city, county, district, state, or federal office which the candidate holds at the time of filing the nomination papers to which he or she was elected by vote of the people, or to which he or she was appointed, in the case of a superior, municipal, or justice court judge.
- (2) The word "incumbent" if the candidate is a candidate for the same office which he or she holds at the time of filing the nomination papers, and was elected to that office by a vote of the people, or, in the case of a superior, municipal, or justice court judge, was appointed to that office.
- (3) No more than three words designating the principal professions, vocations, or occupations of the candidate. For purposes of this section, all California geographical names shall be considered to be one word.
- (4) The phrase "appointed incumbent" if the candidate holds an office other than a judicial office by virtue of appointment, and the candidate is a candidate for election to the same office, or, if the candidate is a candidate for election to the same office or to some other office, the word "appointed" and the title of the office. In either instance, the candidate may not use the unmodified word "incumbent" or any words designating the office unmodified by the word "appointed."

Neither the Secretary of State nor any other election official shall accept a designation which:

- (1) Would mislead the voter.
- (2) Would suggest an evaluation of a candidate, such as outstanding, leading, expert, virtuous, or eminent.
- (3) Abbreviates the word "retired" or places it following any word or words which it modifies.
- (4) Uses a word or prefix, such as "former" or "ex-," which means a prior status. The only exception is the use of the word "retired."
- (5) Uses the name of any political party, whether or not it has qualified for the ballot.
- (6) Uses a word or words referring to a racial, religious, or ethnic group.
- (7) Refers to any activity, which activity is prohibited by law.

The designation shall remain the same for all purposes of both primary and general elections unless the candidate, at least 70 days prior to the general election requests in writing a different designation which the candidate is entitled to use at the time of the request.
(Sec. 10211, E1. C.)

No title or degree shall appear on the same line on a ballot as a candidate's name, either before or after the candidate's name, in the case of any election to any office.
(Sec. 10210.5, E1. C.)

CANDIDATE'S STATEMENT

(Filing Optional - Applies to Nonpartisan Candidates Only)

The law permits Nonpartisan Candidates to file a Candidate's Statement to be mailed with the sample ballot.

Filing of the Statement is not mandatory, but is permissive if the candidate desires to file.

The Statement shall be prepared on a form provided by the Registrar and the candidate shall file the Statement, if any, at the same time his nominating papers are filed. Candidate must type the Candidate's Statement in upper and lower case type. All Statements will be printed in uniform style and size of type. No statements may be underlined.

All costs of printing, handling, etc., shall be paid by the candidate upon presentation of a bill from the County.

The provisions, conditions, and restrictions of the law are as follows:

Each candidate for nonpartisan elective office in any local agency, including any city, county, city and county or district, may prepare a candidate's statement on an appropriate form provided by the Registrar of Voters. Such statement may include the name, age and occupation of the candidate and a brief description of no more than 200 words, of the candidate's education and qualifications expressed by the candidate himself. Such statement shall not include the party affiliation of the candidate, nor membership or activity in partisan political organizations. Such statement shall be filed in the office of the Registrar when his nomination papers are returned for filing, if it is for a primary election, or for an election for offices for which there is no primary. Such statement shall be filed in the office of the Registrar no later than the 60th day before the election, if it is for an election for which nomination papers are not required to be filed. It may be withdrawn, but not changed, during the period for filing nomination papers and until 5 p.m. of the next working day after the close of the nomination period.

The Registrar of Voters shall send to each voter together with the sample ballot, a voter's pamphlet which contains the written statements of each candidate that is prepared pursuant to this section. The statement of each candidate shall be printed in a type of uniform size and darkness, and with uniform spacing. The Registrar shall provide a Spanish translation to those candidates who wish to have one, and shall select a person to provide such translation from the list of approved Spanish language translators and interpreters of the superior court of the county or from an institution accredited by the Western Association of Schools and Colleges.

The local agency may bill each candidate availing himself of these services a sum not greater than the actual prorated costs of printing, handling, and translating the candidate's statement, if any, incurred by the agency as a result of providing this service. Such costs shall not include any charge for mailing. Only those charges may be levied with respect to the candidate's statement and each candidate using these services shall be charged the same.

The clerk shall reject any statement, which contains any obscene, vulgar, profane, scandalous, libelous or defamatory matter, or any language which in any way incites, counsels, promotes or advocates hatred, abuse, violence or hostility toward, or which tends to cast ridicule or shame upon any person or group of persons by reason of sex, race, color, religion or manner of worship, or any language or matter the circulation of which through the mails is prohibited by Congress.

Nothing in this section shall be deemed to make any such statement or the authors thereof free or exempt from any civil or criminal action or penalty because of any false, slanderous or libelous statements offered for printing or contained in the voter's pamphlet.
(Sec. 10012, El. C.)

Cost of Statement:

Due to the many unknown factors involved in printing, handling and mailing the Statement, it is difficult to determine, prior to the election, the exact cost to each candidate who avails himself of this service.

Following is the schedule of estimated costs to each candidate based upon the number of voters within his district:

SCHEDULE OF CANDIDATE'S ESTIMATED COSTS

*(Apply Number of Voters in Candidate's District to Schedule)

| <u>Number of Voters</u> | | <u>Candidate's Cost</u> |
|-------------------------|---------|-------------------------|
| 1 thru | 500 | \$ 100.00 |
| 501 thru | 1,000 | 120.00 |
| 1,001 thru | 2,500 | 160.00 |
| 2,501 thru | 5,000 | 200.00 |
| 5,001 thru | 10,000 | 250.00 |
| 10,001 thru | 25,000 | 450.00 |
| 25,001 thru | 50,000 | 650.00 |
| 50,001 thru | 75,000 | 850.00 |
| 75,001 thru | 125,000 | 1,300.00 |
| 125,001 or more | | 2,000.00 |

*NOTE: The above tentative schedule will be based on voter registration figures as of January 3, 1978.

REGULATIONS CONCERNING POLITICAL CAMPAIGNS

Nomination of Candidates

Every person who subscribes to any nomination petition a fictitious name, or who intentionally subscribes thereto the name of another, or who causes another to subscribe such a name to such a petition is guilty of a felony and is punishable by imprisonment in the state prison for 16 months or two or three years. (Sec. 29300, E1. C.)

Any person who falsely makes or fraudulently defaces or destroys all or any part of a nomination paper, is punishable by a fine not exceeding one thousand dollars (\$1,000) or by imprisonment in the state prison for 16 months or two or three years or by both such fine and imprisonment. (Sec. 29301, E1. C.)

Every person acting on behalf of a candidate is guilty of a misdemeanor who deliberately fails to file at the proper time and in the proper place any nomination paper or declaration of candidacy in his possession, entitled to be filed under the provisions of this code. (Sec. 29302, E1. C.)

Any person who files or submits for filing a nomination paper or declaration of candidacy knowing that it or any part of it has been made falsely is punishable by a fine not exceeding one thousand dollars (\$1,000) or by imprisonment in the state prison for 16 months or two or three years or by both such fine and imprisonment. (Sec. 29303, E1. C.)

Any person who willfully suppresses all or any part of a nomination paper or declaration of candidacy either before or after filing is punishable by a fine not exceeding one thousand dollars (\$1,000) or by imprisonment in the state prison for 16 months or two or three years or by both such fine and imprisonment. (Sec. 29304, E1. C.)

A person shall not directly or through any other person advance, pay, solicit, or receive or cause to be advanced, paid, solicited, or received any money or other valuable consideration to or for the use of any person in order to induce a person not to become or to withdraw as a candidate for public office. Violation of this section shall be punishable by imprisonment in the state prison for 16 months or two or three years. (Sec. 29305, E1. C.)

Political Party Endorsements Prohibited

Official party organizations are prohibited by law from endorsing, supporting, or opposing candidates for nomination by the party in the primary election. No candidate shall claim, nor shall any other person claim on his behalf, that he is the official candidate or the officially endorsed candidate of his party. (Secs. 11702, 29430, E1. C.)

All printed material, and radio and television advertising, having reference to a partisan candidate in the primary election which states or implies that the candidate is endorsed or supported by an organization using the name of a political party as part of its name, must bear a printed statement indicating that the endorsement is by an unofficial

political group and that official organizations are prohibited by law from making endorsements. (Secs. 11703-05, Et. C.)

In addition to any other penalty, no payment shall be made or allowed to any person in consideration for his having prepared, printed, published, or circulated, or assisted in the preparation, printing, publishing, or circulating of any advertisement, bill, placard, poster or other printed or duplicated matter in violation of Section 11703. Any person who knowingly pays or receives a payment in violation of this section is guilty of a misdemeanor. (Sec. 29413, Et. C.)

Political Advertisements

Any paid political advertisement which refers to an election or to any candidate for state or local elective office and which is contained in or distributed with a newspaper, shall bear on each surface or page thereof, in type or lettering at least half as large as the type or lettering of the advertisement or in 10-point roman type, whichever is larger, the words "Paid Political Advertisement." Such words shall be set apart from any other printed matter. (Sec. 11708, Et. C.)

Mass Mailings

No person shall make an expenditure for the purpose of sending a mass mailing unless the sender shows on the outside of each piece of mail in the mass mailing and on at least one of the inserts included within each piece of mail of such mailing the sender's name, street address and city in no less than six-point type. A post office box may be stated in lieu of a street address if the organization's address is a matter of public record with the Secretary of State. A copy of every mass mailing in support of or in opposition to a state candidate or state measure shall be sent to the commission on the same day on which it is mailed to the public generally. Such copies sent to the commission shall be public records. Section 11707 of the Elections Code shall not apply to any mass mailing which complies with this section. (Sec. 84305, Gov. C.)

No newsletter or other mass mailing shall be sent at public expense by or in behalf of an elected city, county, or district official, including an official of a chartered city or chartered county, to any person residing within the jurisdiction from which he or she was elected or to which he or she seeks election, after the elected official has filed a declaration of candidacy, nomination paper, affidavit of acceptance of sponsor's declaration, acceptance of nomination, or any other paper evidencing an intention to be a candidate for any local, state, or federal office. (Sec. 1180, Et. C.)

"Mass mailing" means identical or nearly identical pieces of mail in an amount which, in any month, exceeds 1 percent of the population of the jurisdiction from which the official was elected, according to the latest federal census, or which, in the 30 days preceding a local election, exceeds 200 pieces, but does not include a form letter or other mail which is sent in response to a letter or inquiry or an official mailing required by law. (Sec. 11801, Et. C.)

Every person who violates the provisions of Section 84305 of the Government Code relating to mass mailing is subject to the penal provisions set forth in Chapter 11 (commencing with Section 91000) of Title 9 of the Government Code. (Sec. 29416, E1. C.)

Printed Material

(a) Every person, other than a public officer in the performance of an official duty, is guilty of a misdemeanor who causes to be prepared, reproduced by any means including, but not limited to, printing, photocopying, mimeographing, or silkscreening, posted, or distributed any circular, pamphlet, letter, poster, bill, or other reproduced matter having reference to an election, to any candidate, or to any measure unless there appears on the circular, pamphlet, letter, poster, bill or other reproduced matter in no less than six-point type not subjected to the halftone process the name and address of the business or residence of a person responsible for it.

If the responsible person is acting on behalf of a campaign committee which has filed a statement of organization with the Secretary of State under the provisions of the Political Reform Act of 1974, as amended, the name and address to appear on the reproduced matter may be the name and address of the campaign committee.

(b) Any circular, pamphlet, letter, poster, bill, or other reproduced matter having reference to an election, candidate, or measure, which contains no more information than the following items which appear on the ballot: the date of the election, the nature of the election (e.g., primary, general, special, run-off), the name of the jurisdiction (e.g., Alhambra City, Los Angeles Community College District), and, in the case of a candidate, the name of the candidate, the title of the office, including district number, if any, and in the case of a partisan office, the candidate's party designation, or, in the case of a measure, the title of the measure and its number or letter designation, and the use of the words "Yes on," "No on," "Vote for," "Elect," "Re-elect," "Retain," "Return," "Recall," "Remove," and "Support" is exempted from the identification requirements of subdivision (a); provided, however, that a mass mailing as defined in Section 82041.5 of the Government Code shall comply with Section 84305 of the Government Code.

(c) Any circular, pamphlet, letter, poster, bill, or other reproduced matter referring only to candidates for federal office and subject to the requirements of Section 441d of Title 2 of the United States Code is exempt from the identification requirements of subdivision (a)

(d) A copy of this Elections Code section and Section 84305 of the Government Code shall be provided by the clerk to each candidate or his agent at the time of filing the declaration of candidacy and to the proponents of a local initiative or referendum at the time of filing the petitions. In the case of a statewide initiative or referendum, the Secretary of State

shall provide a copy of this Elections Code section to the proponents of the measure within a reasonable time following receipt of the title and summary from the Attorney General as provided in Section 3503. (Sec. 29410, El. C.)

False or Misleading Information to Voters

No candidate shall attempt to mislead the public by implying by his statements or conduct that he is an incumbent of a public office when he is not. (Sec. 29450, El. C.)

Every person is guilty of a misdemeanor who, with intent to mislead the voters in connection with his campaign for nomination or election to a public office or in connection with the campaign of another person for nomination or election to a public office, shall do either of the following acts:

(a) Assume, pretend, or imply, by his statements or conduct, that he is the incumbent of a public office when that is not the case.

(b) Assume, pretend, or imply, by his statements or conduct, that he is or has been acting in the capacity of a public officer when that is not the case.

Any violation of this section may be enjoined in a civil action brought by any candidate for the public office involved. (Sec. 29450, El. C.)

No person shall distribute a simulated ballot without the printed notice required by Section 11709, El. C., appearing upon each page or surface thereof. Further, no such simulated ballots or the envelope in which it is mailed shall bear any official seal or insignia of any public entity. (Sec. 11709, El. C.)

In addition to any other penalty, any person who prints or otherwise duplicates, or causes to be printed or duplicated, a simulated ballot or simulated sample ballot which does not contain the statement required by Section 11709 or which uses an official seal or insignia in violation thereof, is guilty of a misdemeanor. (Sec. 29414, El. C.)

Every person is guilty of a misdemeanor who knowingly causes to be mailed or distributed, or knowingly mails or distributes, literature to any voter which includes a designation of the voter's precinct polling place other than a precinct polling place listed for that voter in an official precinct polling list which constituted the latest official precinct polling list at sometime not more than 30 days prior to such mailing or distribution. (Sec. 29415, El. C.)

Electioneering

No person, on election day, shall, within 100 feet of a polling place:

(a) Circulate an initiative, referendum, recall, or nomination petition.

(b) Solicit a vote or speak to a voter on the subject of marking his ballot.

(c) Place a sign relating to voters' qualifications or speak to a voter on the subject of his qualifications except as provided in Section 14216.

(d) Do any electioneering.

As used in this section "100 feet of a polling place" shall mean a distance 100 feet from the room or rooms in which voters are signing the roster and casting ballots.

Any person who violates any of the provisions of this section is guilty of a misdemeanor.

(Sec. 29470, El. C.)

Political Signs

The placement of political signs may be regulated by the state, county, or city depending upon the location of such signs:

STATE - Under provisions of the state Outdoor Advertising Act, signs are prohibited within the rights of way of any public road or highway or adjacent to a landscaped freeway; and signs placed near certain types of highways are subject to compliance with the controls set forth in this Act. A permit may be required before such signs are placed. The Department of Transportation is prepared to answer any questions candidates may have about the state law regulating campaign signs. Candidates may call Area Code 916/445-3127, or write to Highway Outdoor Advertising Section, Department of Transportation, 1120 "N" Street, Sacramento, CA 95814.

COUNTY - Prior to the placement of political advertising signs in the unincorporated areas of the County, a permit shall be required. The County Environmental Enforcement Officer shall issue the permit based upon the regulations and restrictions required by ordinance.

Candidates should contact the Environmental Protection Division, of the Environmental Improvement Agency at 1111 E. Mill Street, Bldg. 1, First Floor, San Bernardino, Telephone: 383-1616 or 383-3908.

CITIES - Candidates need to check with the City Clerk of the City in which they wish to place political signs to make sure such signs are not in violation of any city ordinance.

STATEMENT OF ECONOMIC INTERESTS

The conflict of interest provisions of the Political Reform Act of 1974 require that certain candidates file a Statement of Economic Interests at the same time that the Nomination Papers are filed.

Candidates for the following elective offices are required to file:

| | |
|--------------------------------------|------------------------|
| Governor | State Senator |
| Lieutenant Governor | Member of Assembly |
| Attorney General | Judge, Superior Court |
| Controller | Judge, Municipal Court |
| Secretary of State | Board of Supervisors |
| Treasurer | District Attorney |
| Superintendent of Public Instruction | |

If a Statement of Economic Interests has been filed within the previous 60 days in the same jurisdiction, no additional statement is required to be filed.

Candidates must disclose interests in real property and investments valued over \$1,000 held as of the date of filing. A person elected to office will be required to file annual statements while in office. (Secs. 87201, 87203, Gov. C.)

Forms and instructions will be given to the candidates when the nomination papers are issued. The Statement of Economic Interests must be filed at the same time as the nomination papers, with the Registrar of Voters' Office, which will be responsible for forwarding to the appropriate filing officer. (Secs. 81005, 87201, Gov. C.)

Statements of Economic Interests are a matter of public record. They are open to inspection by any interested party, and copies may be obtained from the filing officer at 10 cents per page. (Sec. 81008, Gov. C.)

CAMPAIGN STATEMENT FILING

The Political Reform Act of 1974, is applicable to all state and local candidates, their committees, and committees supporting or opposing ballot measures. This Act requires candidates and committees to report in detailed statements, campaign contributions and expenditures. Three filings are required, two prior to the applicable election, and one filing after the election.

When the candidate applies for nomination papers, he will receive an information manual and the appropriate forms. Candidates should familiarize themselves thoroughly with the information in the manual and to note carefully the filing deadlines.

The Act imposes penalties for late filing of campaign statements, of \$10 per day up to a maximum of \$100 or the cumulative amount stated in the late statement, whichever is greater.

Filing dates for the Primary and General Elections are as follows:

| <u>Primary Election</u> | <u>General Election</u> |
|---------------------------------------|---|
| April 30, 1978 - closing date 4-23-78 | September 30, 1978 - closing date 9-23-78 |
| May 25, 1978 - closing date 5-22-78 | October 26, 1978 - closing date 10-23-78 |
| July 31, 1978 - closing date 6-30-78 | January 31, 1979 - closing date 12-31-78 |

ABSENT VOTING

A voter may elect, under certain circumstances, to vote by absentee ballot, instead of going to the polls on election day. An absentee ballot is obtained by making written application, either in person or by mail, to the Registrar of Voters' Office, 646 Sierra Way, San Bernardino, CA 92415. A voter may use the absentee application, on the reverse side of the polling place notice, enclosed with the sample ballot, or may apply by letter or postcard. No phone requests can be accepted. The application shall include the name of the election, name and residence address of the voter, the signature of the voter, the mailing address to which the ballot is to be sent, and the reason for applying for an absentee ballot. (Secs. 1002, 1003, El. C.)

The period for receiving and processing absent voter ballot applications is from May 8 through May 30, 1978. Applications received prior to May 8, will be held and processed beginning May 8, 1978. (Sec. 1002, El. C.)

The law provides that an absentee ballot shall be available to any registered voter who is unable to appear at their polling place for anyone of the following reasons: (a) Illness; (b) Absence from the precinct on the day of the election; (c) Physical handicap; (d) Conflicting religious commitments; (e) The voter resides more than 10 miles from his polling place. (Sec. 1003, El. C.)

If a voter has not applied for an absentee ballot by the May 30 deadline, absent voter ballots may still be obtained if certain conditions exist:

- (1) Illness or disability resulting in his confinement in a hospital, sanitorium, nursing home, or place of residence.
- (2) Because of a physical handicap a voter is unable to go to his polling place, or is unable to vote due to existing architectural barriers denying him physical access to the polling place or voting booth.
- (3) Because of conditions resulting in his absence from the precinct on election day.

Any voter meeting the requirements of 1, 2, or 3 above, may request in a written statement, signed under penalty of perjury that a ballot be delivered to him. The above described conditions must have occurred after May 30, 1978. The ballot will be delivered to any authorized representative of the voter who presents this written statement to the Registrar of Voters' Office. The voter, after marking the ballot, may return it through the authorized representative to either the Registrar of Voters' Office or to any polling place in San Bernardino County. (Sec. 1017, El. C.)

All voted absentee ballots must be received no later than the time the polls close at 8:00 p.m. on election day, June 6, 1978. Ballots may be mailed or delivered to the Registrar of Voters' Office, or delivered in person to any polling place in San Bernardino County. (Secs. 1013, 1016, El. C.)

ELECTION CALENDAR

DIRECT PRIMARY ELECTION

(Secs. 23, 2500-03, 2551, El. C.)

TUESDAY, JUNE 6, 1978,

SIGNATURES IN LIEU OF FILING FEE

J A N *2 (155) First day Registrar of Voters to furnish forms for securing signatures in lieu of filing fee. (Sec. 6555, El. C.)

STATEMENT OF REGISTRATION

J A N 22 (135) Last date Registrar of Voters transmits statement to Secretary of State based on registration as of January 3, 1978. The Secretary of State, within 30 days after receiving such statements, shall compile a statewide report setting forth the number of voters, by party affiliation, in the State and in each county, city, supervisorial, assembly, senatorial and congressional district. (Secs. 6460-61, El. C.)

NEW POLITICAL PARTIES

J A N 22 (135) Last date party not otherwise qualified may qualify for participation in primary election by filing sufficient petition certifications with Secretary of State through Registrar of Voters or by sufficient registration reported to Secretary of State by Registrar of Voters.

Number of valid registrations required - - - - - 63,646
(1% of 6,364,597, entire vote of State at 1974
Gubernatorial Election.) (Sec. 6430(b), El. C.)

Valid signatures required by petition - - - - - 636,460
(10% of 6,364,597, entire vote of State at 1974
Gubernatorial Election.) (Sec. 6430(c), El. C.)

Whenever the registration of any party which qualified in the previous direct primary election falls below one-fifteenth of one percent of total state registration, that party shall not be qualified to participate in the primary election but shall be deemed to have been abandoned by the voters. The Secretary of State shall immediately remove the name of the party from any list, notice, ballot or other publication containing the names of the parties qualified to participate in the primary election.

DECLARATION OF INTENTION STATE LEGISLATURE & JUDICIAL OFFICES

J A N *30 (127) STATE LEGISLATURE - Period for filing a signed Declaration of Intention by each candidate for State Senator or Member of Assembly, on a form to be supplied by the Registrar of Voters. Filing fee required at time of filing declaration. (Secs. 6553, 25500, El. C.)
thru

F E B 8 (118)

If the incumbent fails to file a Declaration of Intention by 5:00 p.m., February 8, 1978, persons other than the incumbent may file Declarations of Intention no later than 5:00 p.m., February 13, 1978. (Sec. 25500, El. C.)

DECLARATION OF INTENTION (Continued)

JUDICIAL OFFICE - Period every candidate for judicial office to file in duplicate, written and signed Declaration of Intention on a form to be supplied by the Registrar of Voters. If numerically designated office, such declaration to so designate. Copy of Declaration by Superior Court candidate to be forwarded by the Registrar of Voters to the Secretary of State. (Sec. 25301, E1. C.)

Filing fee for judicial office is not required at this time.

MEMBERSHIP, COUNTY CENTRAL COMMITTEE
(AMERICAN INDEPENDENT PARTY)

J A N 3 1
(126) Last day Registrar of Voters computes the membership allotted to each Supervisorial district. Total membership to be at least 25 members. (Secs. 9700, 9721, E1. C.)

MEMBERSHIP, COUNTY CENTRAL COMMITTEE
(PEACE AND FREEDOM PARTY)

F E B 1
(125) Last day Secretary of State to compute the number of members of central committees for the Peace and Freedom Party and certify to Registrar of Voters. (Sec. 9770, E1. C.)

Registrar of Voters to compute number to be elected by each supervisorial district if applicable, not later than February 11, 1978. (Secs. 9763, 9771, E1. C.)

DECLARATION OF INTENTION
STATE LEGISLATURE

F E B 13
5:00 p.m. Deadline for any person, other than the incumbent State Senator or Assemblyman, to file Declaration of Intention and pay filing fee to run for office, if the incumbent State Legislator failed to file a Declaration of Intention by 5:00 p.m., February 8, 1978. (Sec. 25500, E1. C.)

CIRCULATION OF NOMINATION PAPERS
(Direct Primary Election)

F E B 13
(113) First day to circulate. Period for circulating nomination documents and to leave or file with Registrar of Voters: Declaration of candidacy, certificates appointing circulators, and nomination papers. (Secs. 6490, 6550, E1. C.)

thru

M A R 10
(88)

Circulator must be voter in the district or political subdivision in which the candidate is to be voted upon under Secs. 6498 and 6499, E1. C. No requirement that he be registered as affiliated with same party as that of candidate.

5:00 P.M.

Certificates appointing circulators must be filed with Registrar of Voters of county in which deputies reside at or before the time nomination papers are left for filing or examination. (Sec. 6497, E1. C.)

All nomination papers required for filing with Secretary of State, including office of Judge, Superior Court, to be transmitted by Registrar of Voters within 5 days after being left for examination. (Secs. 6505, 6507-08, 6550, E1. C.)

Candidate's Statements and Financial Disclosure forms must be filed at this time, if applicable. (Sec. 10012, E1. C., 87201, Gov. C.)

OFFICES TO BE VOTED ON

F E B 22
(104)

On or before this date, Secretary of State shall transmit to Registrar of Voters a notice designating all offices except county offices and judges of inferior courts for which candidates are to be nominated at the Primary Election together with names of parties qualified to participate. (Sec. 6462, E1. C.)

PUBLISH Registrar of Voters shall publish once a week for two successive weeks, so much of the notice as may be applicable to his county. (Sec. 6464, El. C.)

SIGNATURES IN LIEU OF FILING FEE

F E B 23 Last day for candidates to file signatures in lieu of filing fee petitions.
(103) (Sec. 6555, El. C.)

MEMBERSHIP, COUNTY CENTRAL COMMITTEES
(REPUBLICAN PARTY)

M A R 6 Period in which Registrar of Voters computes the membership allotted to each
thru supervisory district. (Sec. 9371, El. C.)
M A R 13

CIRCULATION OF NOMINATION PAPERS
(Direct Primary Election)

M A R 10 Deadline for circulating nomination papers and leaving nomination documents with
(88) Registrar of Voters for filing or examination, and certification to Secretary
of State. (See like heading under marginal February 13 thru March 10.)
5:00 P.M. Candidate's Statements and Financial Disclosure forms must be filed at this
time, if applicable. (Sec. 10012, El. C., 87201, Gov. C.)

NONFILING BY INCUMBENT LEGISLATOR - EXTENSION

M A R 10 If the incumbent Legislator has filed a declaration of intention, but for any
EXTEND reason fails to qualify for nomination by this date, an additional 5 days shall
to be allowed for circulating and leaving nomination papers by any qualified
M A R 15 person notwithstanding nonfiling of declaration of intention. (Sec. 25500, El. C.)

NONFILING BY INCUMBENT JUDGE - EXTENSION

M A R 10 If incumbent Judge, Superior, Municipal or Justice Court, has filed declaration
EXTEND of intention and dies on or before such date, or has failed to file nomination
to papers, an additional 5 days shall be allowed for circulating and leaving
M A R 15 nomination papers by any qualified person notwithstanding nonfiling of
declaration of intention. (Sec. 25305, El. C.)

NONFILING BY INCUMBENT COUNTY OFFICER - EXTENSION

M A R 10 If incumbent county or district officer fails to qualify for nomination by this
EXTEND date, an additional 5 days shall be allowed for circulating and leaving
to nomination papers by any qualified person, other than the incumbent.
M A R 15 (Sec. 6490.1, El. C.)

NOMINATION PAPERS - AFTER DEATH OF CANDIDATE

M A R 10 If only one candidate has declared candidacy for a partisan nomination (considering
thru all qualified parties) and that candidate dies during this period, any person
M A R 15 qualified under Sec. 6401 may circulate and deliver nomination papers for office
to Registrar of Voters not later than 5:00 p.m., March 24. (Sec. 6490.2, El. C.)

CANDIDATE'S STATEMENT

M A R 13 Last day to withdraw Candidate's Statement. (Sec. 10012, El. C.)

GOVERNOR'S PROCLAMATION

M A R 14 Last day for Governor to issue Primary Election Proclamation.
(84) (Sec. 2553, El. C.)

FILING NOMINATION PAPERS
(Direct Primary Election)

M A R 15 Deadline for Registrar of Voters to file nomination papers with Secretary of
(83) State. (Secs. 6490, 6505, 6507, 6550, E1. C.)

DEATH OF CANDIDATE

M A R 15 Last date in event of death of lone candidate for office to enable any person
(83) qualified under Sec. 6401 to circulate and file by 5:00 p.m., March 24.
(Sec. 6490.2, E1. C.)

ORDER OF CANDIDATES ON BALLOT

M A R 16 On this date, the Secretary of State to hold drawing of randomized alphabet to
(82) determine order of candidates on the Primary ballot. (Sec. 10217, E1. C.)

JUDGES - WHEN NOT ON BALLOT

M A R 16 If only the incumbent has filed nomination papers for the Office of Superior
Court Judge, Municipal Court Judge or Justice Court Judge in any county or any
judicial district, his name shall not appear on the ballot unless a petition
is filed on or before April 4 indicating a write-in campaign will be conducted
for the office. (Sec. 25304, E1. C.)

CONSOLIDATION OF ELECTIONS

M A R 24 Last date local governing board may file resolution with Supervisors and copy
(74) with Registrar of Voters requesting consolidation of local election with
statewide election. Files list of candidates, if any, with Registrar of Voters
on or before March 31. Supervisors may order consolidation.
(Secs. 23301-02, E1. C.)

CIRCULATING NOMINATION PAPERS
IN EVENT OF DEATH OF LONE PARTISAN CANDIDATE

M A R 24 Deadline for any person qualified under Sec. 6401 to circulate and deliver
(74) nomination papers for partisan office for which only one candidate has filed
5:00 P.M. and who dies during period March 10 thru March 15. (Sec. 6490.2, E1. C.)

COUNTY CENTRAL COMMITTEE
(Where Candidates do not Exceed Membership)
(DEMOCRATIC, REPUBLICAN, AMERICAN INDEPENDENT PARTIES)

M A R 25 Last date Registrar of Voters determines whether number of candidates does not
(73) exceed number to be elected from that supervisorial or assembly district.

If filed candidates are less than, or equal to, number to be elected the names
of candidates are omitted from ballot and shall be entitled to certificates
of election, UNLESS on or before April 4 a petition by 25 registered voters
is filed with the Registrar of Voters indicating a write-in campaign.
(Secs. 8873, 9373, 9723, E1. C.)

CERTIFIED LIST OF CANDIDATES
NOTICE OF ELECTION

M A R 30 Last day Secretary of State to transmit to Registrar of Voters a certified list of
(68) candidates who are eligible to be voted for at the Direct Primary Election.
(Secs. 6580, 6584, E1. C.)

PUBLISH Upon receipt, The Registrar of Voters shall publish the list of candidates and
notice of election once each week for two successive weeks in a newspaper of
general circulation published in the county. (Secs. 6584-88, E1. C.)

UNCONTESTED COUNTY CENTRAL COMMITTEE OFFICE
(DEMOCRATIC, REPUBLICAN, AMERICAN INDEPENDENT PARTIES)

A P R 4 Last date to file petition by 25 registered voters with Registrar of Voters indicating write-in campaign where regularly filed candidates are less than, or equal to, number to be elected from that district; (Otherwise, names omitted from ballot and candidates to be declared elected.) (Secs. 8873, 9373, 9723, El. C.)

DEATH OF CANDIDATE

A P R 8 Last date Registrar of Voters to ascertain death of candidate for omission of (59) deceased candidate's name from ballot. (Sec. 6658, El. C.)

MAIL SAMPLE BALLOTS

A P R 27 Registrar of Voters to mail sample ballot, polling place notice, arguments on (40) measures, and voters pamphlets, if any. Send sample partisan ballot to thru chairman, county central committee and to each candidate of that party to be J U N 1 voted on in county. Post sample ballots in conspicuous place. (5) (Secs. 10007-10009, El. C.)

CAMPAIGN STATEMENTS - FIRST FILING
COMMITTEES, CANDIDATES, MEASURES

A P R 30 Last day each candidate and each committee supporting or opposing a candidate or candidates or supporting or opposing a ballot measure or ballot measures to file campaign statements showing receipts and expenditures through April 23. (Sec. 84201, Gov. C.)

Exceptions:

County Central Committee

A candidate for county central committee shall file a campaign statement not later than July 31, with a closing date of June 30, and shall not be required to file any additional campaign statement, unless the candidate has received contributions for the election in which case the candidate shall observe the above filing requirements. (Sec. 84202, Gov. C.)

Judicial Office

A candidate for reelection for a judicial office whose name does not appear on the ballot shall file a campaign statement not later than January 31, 1979, with a closing date of December 31, 1978, and shall not be required to file any additional campaign statements. (Sec. 84207, Gov. C.)

STATEMENT OF REGISTRATION

M A Y 2 Last date Registrar of Voters to transmit statement to Secretary of State (35) based on registration closed April 13 - such statement showing total number of voters in county, the number having declined to state party affiliation, and registration, by party affiliation, in each city, supervisorial, assembly, senatorial and congressional district affecting his county. (Secs. 6460-61, El. C.)

PRECINCT BOARDS -- POLLING PLACES

M A Y 7 Last date Registrar of Voters to issue order appointing precinct boards and (30) designate polling places. (Sec. 1638, El. C.)

PUBLISH After appointments, Registrar of Voters to publish list with political affiliation of each appointee and showing precinct polling places, once in a newspaper of general circulation. Send copy of list to county central committees. (Secs. 1642-1643.3, El. C., Sec. 6061, Gov. C.)

REGISTRATION CLOSES

M A Y 8 Last day to register or transfer. (Sec. 305, El. C.)
(29)

A person duly registered as a voter, who moves within 29 days prior to an election, shall, for the purpose of such election, be entitled to vote in the precinct from which the person moved until the close of the polls on election day. (Sec. 217, El. C.)

Unregistered special absentee voter released from service after this date may appear before Registrar of Voters and register and vote up to 8:00 p.m., June 6. Require proof of discharge. (Sec. 1205, El. C.)

Special absentee voter returned to county of residence after final day for AV ballot application, may appear before Registrar of Voters and register and/or vote up to 8:00 p.m., June 6. (Sec. 1206.3, El. C.)

ABSENT VOTER BALLOT APPLICATIONS

M A Y 8 Any voter may file with Registrar of Voters, in person or by mail, a written
(29) application during this period for an absent voter ballot. (Sec. 1002, El. C.)
M A Y 30
(7)

PREPARE SAMPLE BALLOTS

M A Y 12 Last date Registrar of Voters to prepare sample ballots for Direct Primary
(25) Election. Paper of different texture from official ballot paper.
(Sec. 10007, El. C.)

STATE BALLOT PAMPHLET

M A Y 16 Last day Registrar of Voters to complete mailing of state ballot pamphlet for
(21) each voter registered prior to the 53rd day before the election.
(Sec. 3578, El. C.)

CAMPAIGN STATEMENTS - SECOND FILING

M A Y 25 Last day to file campaign statements showing receipts and expenditures through
(12) May 22, 1978. (Sec. 84201, Gov. C.)

STATE BALLOT PAMPHLET

M A Y 27 Last day Registrar of Voters to complete mailing of state ballot pamphlet for
(10) each voter registered between 54 days and 29 days before the election.
(Sec. 3578, El. C.)

MAIL SAMPLE BALLOTS

J U N 1 Deadline for Registrar of Voters to mail sample ballots and post in conspicuous
(5) place. (Secs. 10007-09, El. C.)

PROCESSING AND COUNTING ABSENT VOTER BALLOTS

J U N 1 At any time thereafter, Registrar of Voters, commences process of absent voter
(5) and after polls closed on election day commences count. (Sec. 1400, El. C.)

VOTING ABSENT VOTER BALLOTS

J U N 6 Deadline for all absent voter ballots to be received by Registrar, or returned
8:00 P.M. to any member of a precinct board at any polling place within the county.
(Secs. 1013, 1016, El. C.)

Any voter with AV ballot may vote in Registrar's office before this time.
(Sec. 1014, El. C.)

DAY OF ELECTION

J U N 6 Polls open 7:00 a.m. to 8:00 p.m. (Secs. 23, 2500, 2501, 2551, 14206, E1. C.)

CANVASS, DIRECT PRIMARY RETURNS

J U N 8 Period Registrar of Voters to canvass returns, enter on records and certify to Secretary of State and Board of Supervisors. (Secs. 17080-90, E1. C.)

thru

J U L 4 Send duplicate certificate of result to chairman of each county central committee. (Sec. 17091, E1. C.)

(28) Registrar of Voters to issue Certificates of Nomination or Election affecting county offices, inferior courts and county central committee. (Secs. 6614.5-6616, 17112, E1. C.)

STATEMENT OF VOTE, DIRECT PRIMARY ELECTION

J U L 15 Deadline for Secretary of State to compile and file statement of canvassed returns. (Sec. 17121, E1. C.)

(39)

Issues Certificates of Nomination affecting all Statewide offices, Congressional office, State Senate or Assembly, State Board of Equalization, and office of Judge, Superior Court. (Secs. 6617, 17123, E1. C.)

CAMPAIGN STATEMENTS - FINAL FILING

J U L 31 Last day to file campaign statements showing receipts and expenditures through June 30, 1978. If prior to the closing date all liabilities of the filer have been paid and no additional contributions or expenditures are expected, the campaign statement may be filed at any time after the election with a closing date other than June 30, 1978. (Secs. 84201, 84205, Gov. C.)

*NOTE: - Where the day on, before, or within which the law prescribed the performance of these duties falls on a Saturday, Sunday or a Holiday, it is indicated that the same must or may be performed on the preceding business day or on the next following business day, depending on whether, considering the nature of the act or duty to be performed, the law requires that the time be restricted or permits such time to be extended.

ELECTION CALENDAR

GENERAL ELECTION

TUESDAY, NOVEMBER 7, 1978

GOVERNOR'S PROCLAMATION

AUG 15 Last day for Governor to issue General Election Proclamation.
(84) (Sec. 2553, E.I. C.)

CONSOLIDATION OF ELECTIONS

AUG 25 Last date local governing board may file resolution with Supervisors and copy
(74) with Registrar of Voters requesting consolidation of local election with
statewide election. Files list of candidates, if any, with Registrar of Voters
on or before September 1. Supervisors may order consolidation.
(Secs. 23301-02, E.I. C.)

CANDIDATES - CHANGE OF OCCUPATIONAL DESIGNATION

AUG 29 Last day for candidate to request in writing a different occupational designation.
(70) (Sec. 10211, E.I. C.)

ORDER OF CANDIDATES ON BALLOT

SEP 5 On this date, the Secretary of State to hold drawing of randomized alphabet to
(63) determine order of candidates on the General Ballot. (Sec. 10217, E.I. C.)

CERTIFICATE OF SECRETARY OF STATE NOMINATED CANDIDATES

SEP 6 Last day Secretary of State shall deliver to the Registrar of Voters a certificate
(62) showing:

- (a) The name of every person entitled to receive votes at the general election who has received the nomination as a candidate for public office.
- (b) For each nominee the name of the party which has nominated him, if any.
- (c) The designation of the public office for which he has been nominated.
(Sec. 6618-20, E.I. C.)

CANDIDATES STATEMENT

SEP 8 Last day candidate to file Candidate's Statement for General Election.
(60) (Sec. 10012, E.I. C.)

JUDGES - WHEN NOT ON BALLOT

SEP *8 Last day to file petition indicating a write-in campaign will be conducted,
(59) if name of incumbent did not appear on the primary ballot. (Sec. 25304, E.I. C.)

FILING VACANCY ON BALLOT

S E P 9 PARTISAN OFFICE - Last day vacancy may be filled and certified by party committee.
(59) (Secs. 6655, 6657, El. C.)

NONPARTISAN OFFICE - Last day to fill vacancy of candidate nominated at Primary Election, by the candidate receiving next highest number of votes. (Sec. 6656, El. C.)

SUPERIOR COURT JUDGE-Any candidate who has been nominated at any primary election, in which election there were at least two other candidates, and who has been appointed to any federal or state office may request the Registrar of voters to have their name removed from the ballot of the next ensuing general election.
(Sec. 6653.3, El. C.)

DEATH OF CANDIDATE

S E P 9 Last date Registrar to ascertain death of candidate for omission of deceased
(59) candidate's name from ballot. (Sec. 6659, El. C.)

NOTICE OF ELECTION

S E P 18 Last day Registrar of Voters to publish a notice of election in a newspaper of
(50) general circulation once within the county containing:

- PUBLISH (a) The date of the election.
(b) The purpose of the election specifying offices to be filled, if any.
(c) The hours the polls are to be open.

(Sec. 2554, El. C.)

MAIL SAMPLE BALLOTS

S E P 28 Registrar of Voters to commence to mail sample ballots, polling place notice,
(40) arguments on measures, and voters pamphlets, if any. (Sec. 10010, El. C.)
thru
O C T 23
(15)

CAMPAIGN STATEMENTS - FIRST FILING

S E P 30 Last day to file campaign statements showing receipts and expenditures through
September 23, 1978. (Sec. 84201, Gov. C.) (See like heading on the Primary
Election Calendar - marginal April 30, for additional information.)

STATEMENT OF REGISTRATION

O C T 3 Last date Registrar of Voters to transmit statement to Secretary of State
(35) based on registration closed September 14 -- such statement showing total number of voters in county, the number having declined to state party affiliation, and registration, by party affiliation, in each city, supervisorial, assembly, senatorial and congressional district, affecting his county.
(Secs. 6460-61, El. C.)

PRECINCT BOARDS -- POLLING PLACES

O C T 8 Last date Registrar of Voters to issue order appointing precinct boards and
(30) designate polling places. (Secs. 1638, El. C.)

PUBLISH After appointments, Registrar of Voters to publish list with political affiliation of each appointee and showing precinct polling places, once in a newspaper of general circulation. Send copy of list to county central committees.
(Secs. 1642-1643.3, El. C., Sec. 6061, Gov. C.)

REGISTRATION CLOSES

O C T 9 Last day to register or transfer. (Sec. 305, El. C.)
(29)

ABSENT VOTER BALLOT APPLICATIONS

O C T 9 Any voter may file with Registrar of Voters, in person or by mail, a written
(29) application during this period for an absent voter ballot.
thru (Sec. 1002, El. C.)
O C T 31
(7)

STATE BALLOT PAMPHLET

O C T 17 Last day Registrar of Voters to complete mailing of state ballot pamphlet for
(21) each voter registered prior to the 53rd day before the election.
(Sec. 3578, El. C.)

CAMPAIGN STATEMENTS - SECOND FILING

O C T 26 Last day to file campaign statements showing receipts and expenditures through
(12) October 23, 1976. (Sec. 84201, Gov. C.)

STATE BALLOT PAMPHLET

O C T 28 Last day Registrar of Voters to complete mailing of state ballot pamphlet for
(10) each voter registered between 54 days and 29 days before the election.
(Sec. 3578, El. C.)

MAIL SAMPLE BALLOTS

O C T 28 Deadline for Registrar of Voters to mail sample ballots. (Sec. 10010, El. C.)
(10)

PROCESSING AND COUNTING ABSENT VOTER BALLOTS

N O V 2 At any time thereafter, Registrar of Voters commences process of absent voter
(5) ballots and after polls closed on election day commences count.
(Sec. 1400, El. C.)

VOTING ABSENT VOTER BALLOTS

N O V 7 Deadline for all absent voter ballots to be received by Registrar, or returned
8:00 P.M. to any member of a precinct board at any polling place within the county.
(Secs. 1013, 1016, El. C.)

Any voter with AV ballot may vote in Registrar's office before this time.
(Sec. 1014, El. C.)

DAY OF ELECTION

N O V 7 Polls open 7:00 A.M. to 8:00 P.M. (Secs. 20, 2500, 2501, 2550, 14206, El. C.)

CANVASS - GENERAL ELECTION

N O V 9 Period Registrar of Voters to canvass returns, enter on records and certify to
thru Secretary of State and Board of Supervisors. (Secs. 17080-90, El. C.)
D E C 5

(28) Send duplicate of the certified statement of the result of votes cast to the
chairman of the county central committees of each party. (Sec. 17091, El. C.)

Registrar of Voters to issue Certificates of Election affecting county offices
and inferior courts. (Secs. 17110-13, El. C.)

STATEMENT OF VOTE - GENERAL ELECTION

D E C 16 Deadline for Secretary of State to compile and file statement of canvassed
(39) returns. (Sec. 17121, E1. C.)

Issues Certificates of Election affecting all statewide offices, Congressional offices, State Senate, or Assembly, Member Board of Equalization, and office of Judge, Superior Court. (Sec. 17123, E1. C.)

CANDIDATES - FINAL STATEMENT

J A N 31
1979

Last day to file campaign statements showing receipts and expenditures through December 31, 1978. If prior to the closing date all liabilities of the filer have been paid and no additional contributions or expenditures are expected, the campaign statement may be filed at any time after the election with a closing date other than December 31, 1978. (Secs. 84201, 84205, Gov. C.)

*N O T E:

Where the day on, before, or within which the prescribed performance of these duties falls on a Saturday, Sunday or a Holiday, it is indicated that the same must or may be performed on the preceding business day or on the next following business day, depending on whether, considering the nature of the act or duty to be performed, the law requires that the time be restricted or permits such to be extended.

SAN BERNARDINO COUNTY REGISTRAR OF VOTERS
 POLITICAL SUBDIVISION BY DISTRICT
 12-23-77

6601-VR168

PAGE 1

| NAME OF POLITICAL SUBDIV. | DEM. | REP. | AMER. INDEP | PEACE &FRDM | MISC | D/S | TOTAL |
|---------------------------|--------|--------|----------------|----------------|------|-------|--------|
| SUPERVISORIAL DISTRICT 1 | 30669 | 23345 | 693 | 83 | 69 | 3943 | 58802 |
| SUPERVISORIAL DISTRICT 2 | 33835 | 25268 | 590 | 119 | 57 | 3353 | 63222 |
| SUPERVISORIAL DISTRICT 3 | 29163 | 25174 | 574 | 70 | 43 | 3558 | 58582 |
| SUPERVISORIAL DISTRICT 4 | 29835 | 16140 | 530 | 77 | 72 | 2712 | 49366 |
| SUPERVISORIAL DISTRICT 5 | 31903 | 16413 | 519 | 127 | 74 | 2995 | 52031 |
| COUNTY TOTALS | 155405 | 106340 | 2906 | 476 | 315 | 16561 | 282003 |
| PERCENT REGISTRATION | 55.11 | 37.71 | 1.03 | .17 | .11 | 5.87 | |
| CONGRESSIONAL DISTRICT 35 | 42789 | 33551 | 701 | 124 | 98 | 4318 | 81581 |
| CONGRESSIONAL DISTRICT 36 | 48944 | 17435 | 816 | 165 | 105 | 3970 | 71435 |
| CONGRESSIONAL DISTRICT 37 | 63672 | 55354 | 1389 | 187 | 112 | 8273 | 128987 |
| SENATORIAL DISTRICT 16 | 19601 | 13057 | 422 | 55 | 36 | 2367 | 35538 |
| SENATORIAL DISTRICT 32 | 94679 | 53029 | 1560 | 302 | 205 | 8603 | 158378 |
| SENATORIAL DISTRICT 34 | 41125 | 40254 | 924 | 119 | 74 | 5591 | 88087 |
| ASSEMBLY DISTRICT 34 | 19601 | 13057 | 422 | 55 | 36 | 2367 | 35538 |
| ASSEMBLY DISTRICT 65 | 35435 | 27451 | 532 | 101 | 80 | 3334 | 66933 |
| ASSEMBLY DISTRICT 66 | 59244 | 25578 | 1028 | 201 | 125 | 5269 | 91445 |
| ASSEMBLY DISTRICT 67 | 41125 | 40254 | 924 | 119 | 74 | 5591 | 88087 |

SAN BERNARDINO COUNTY REGISTRAR OF VOTERS
POLITICAL SUBDIVISION BY CITY
12-23-77

6601-VR168

PAGE 1

| NAME OF POLITICAL SUBDIV. | DEM. | REP. | AMER. INDEP | PEACE &FRDM | MISC | D/S | TOTAL |
|---------------------------|-------|-------|----------------|----------------|------|------|--------|
| ADELANTO | 352 | 204 | 10 | 3 | | 76 | 645 |
| BARSTOW | 4017 | 1818 | 67 | 6 | 11 | 426 | 6345 |
| CHINO | 5177 | 3554 | 78 | 12 | 15 | 482 | 9318 |
| COLTON | 5287 | 1306 | 71 | 13 | 7 | 345 | 7029 |
| FONTANA | 5743 | 2158 | 100 | 22 | 9 | 469 | 8501 |
| LOMA LINDA | 699 | 2465 | 47 | 1 | 5 | 499 | 3716 |
| MONTCLAIR | 4205 | 2325 | 60 | 9 | 8 | 375 | 6982 |
| NEEDLES | 1090 | 463 | 10 | | 1 | 98 | 1662 |
| ONTARIO | 13606 | 8422 | 199 | 42 | 37 | 1005 | 23311 |
| RANCHO CUCAMONGA | 6938 | 5622 | 162 | 21 | 18 | 908 | 13669 |
| REDLANDS | 7266 | 8528 | 114 | 20 | 10 | 1009 | 16947 |
| RIALTO | 7159 | 3641 | 127 | 17 | 14 | 640 | 11598 |
| SAN BERNARDINO | 25700 | 11669 | 368 | 89 | 59 | 2256 | 40141 |
| UPLAND | 8029 | 8879 | 107 | 25 | 17 | 949 | 18006 |
| VICTORVILLE | 2271 | 1693 | 46 | 8 | 5 | 292 | 4315 |
| INCORPORATED AREA TOTAL | 97539 | 62747 | 1566 | 288 | 216 | 9829 | 172185 |
| UNINCORPORATED AREA TOTAL | 57866 | 43593 | 1340 | 188 | 99 | 6732 | 107813 |

SAN BERNARDINO COUNTY REGISTRAR OF VOTERS
 JUDICIAL DISTRICT SUMMARY
 12-23-77

6601-VR158

PAGE 1

| NAME OF JUDICIAL DISTRICT | DEM. | REP. | AMER. INDEP | PEACE &FRDM | MISC | D/S | TOTAL |
|---------------------------|--------|--------|----------------|----------------|------|-------|--------|
| BARSTOW DIV SBCMCD | 7059 | 3419 | 180 | 15 | 15 | 828 | 11516 |
| BEAR VALLEY | 1941 | 2200 | 57 | 5 | 27 | 365 | 4595 |
| BLOOMINGTON | 4429 | 1357 | 98 | 16 | 5 | 376 | 6281 |
| CENTRAL DIV SBCMCD | 34501 | 16475 | 564 | 125 | 78 | 3235 | 54978 |
| CHINO DIV SBCMCD | 7831 | 5982 | 125 | 19 | 17 | 755 | 14729 |
| COLTON | 7209 | 2734 | 106 | 16 | 9 | 573 | 10647 |
| CREST FOREST | 2656 | 3124 | 45 | 18 | 9 | 341 | 6193 |
| CUCAMONGA-ETIWANDA | 7019 | 5633 | 165 | 21 | 18 | 910 | 13766 |
| EAST DIV SBCMCD | 8292 | 9432 | 133 | 29 | 12 | 1134 | 19032 |
| HIGHLAND | 3086 | 1902 | 85 | 13 | 1 | 401 | 5488 |
| MISSION | 1520 | 3086 | 69 | 3 | 9 | 623 | 5310 |
| NEEDLES-CALZONA | 1721 | 846 | 18 | 1 | 1 | 171 | 2758 |
| TRONA | 788 | 440 | 12 | 7 | | 101 | 1348 |
| TWENTYNINE PALMS | 6642 | 5790 | 182 | 13 | 3 | 910 | 13540 |
| VALLEY DIV SECMCD | 16943 | 7374 | 318 | 59 | 25 | 1482 | 25201 |
| VICTOR DIV SBCMCD | 10129 | 8429 | 212 | 30 | 20 | 1281 | 20101 |
| W VAL DIV SBCMCD | 27107 | 20892 | 401 | 80 | 64 | 2501 | 51045 |
| YUCAIPA | 6532 | 7225 | 136 | 6 | 2 | 574 | 14475 |
| COUNTY TOTALS | 155405 | 106340 | 2906 | 476 | 315 | 16561 | 282003 |

SAN BERNARDINO COUNTY REGISTRAR OF VOTERS
SCHOOL DISTRICT SUMMARY
12-23-77

6601-VR168

PAGE 1

| NAME OF SCHOOL DISTRICT | DEM. | REP. | AMER. INDEP | PEACE &FRDM | MISC | D/S | TOTAL |
|-------------------------|-------|-------|----------------|----------------|------|------|-------|
| ADELANTO | 687 | 417 | 23 | 4 | | 157 | 1288 |
| ALTA LOMA | 3086 | 3258 | 64 | 7 | 2 | 423 | 6840 |
| APPLE VALLEY | 2153 | 2620 | 28 | 8 | 3 | 315 | 5127 |
| CENTRAL | 2683 | 1954 | 74 | 9 | 7 | 356 | 5083 |
| CUCAMONGA | 804 | 240 | 16 | 5 | 8 | 71 | 1144 |
| ETIWANDA | 481 | 270 | 11 | | 2 | 69 | 833 |
| GUASTI | 24 | 1 | | | 1 | 1 | 27 |
| HELENDALE | 91 | 104 | 1 | | | 10 | 206 |
| HESPERIA | 2869 | 2040 | 85 | 2 | 8 | 266 | 5270 |
| LOS FLORES | 36 | 31 | | 3 | | 4 | 74 |
| LUCERNE VALLEY | 643 | 493 | 14 | 6 | 1 | 67 | 1224 |
| MOUNTAIN VIEW | 74 | 180 | 5 | 1 | | 11 | 271 |
| MOUNT BALDY | 71 | 84 | | | | 17 | 172 |
| ONTARIO-MONTCLAIR | 18360 | 11097 | 279 | 52 | 47 | 1398 | 31233 |
| ORD GRANDE | 138 | 63 | | 1 | | 11 | 213 |
| PHELAN | 429 | 270 | 2 | 1 | | 38 | 740 |
| UPLAND | 8056 | 9314 | 104 | 27 | 15 | 988 | 18504 |
| VICTOR | 3133 | 2445 | 59 | 8 | 8 | 413 | 6071 |
| WRIGHTWOOD | 482 | 521 | 3 | 2 | | 60 | 1068 |
| BAKER VALLEY UNIF | 211 | 101 | 24 | 1 | 1 | 37 | 375 |
| BARSTOW UNIF | 6851 | 3321 | 156 | 14 | 14 | 791 | 11147 |
| BEAR VALLEY UNIF | 1917 | 2153 | 57 | 6 | 27 | 364 | 4524 |

SAN BERNARDINO COUNTY REGISTRAR OF VOTERS
SCHOOL DISTRICT SUMMARY
12-23-77

6601-VR168

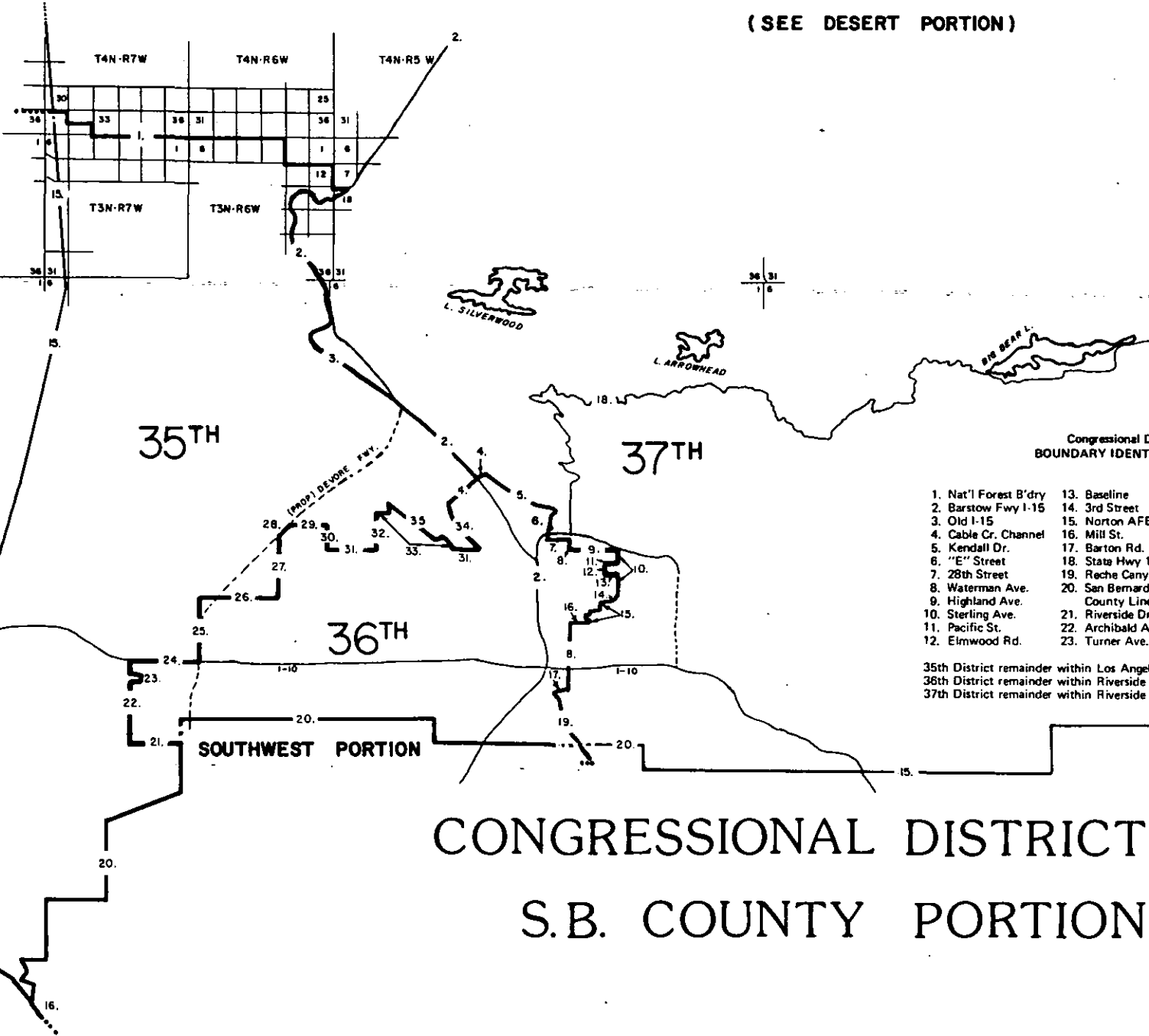
PAGE 2

| NAME OF SCHOOL DISTRICT | DEM. | REP. | AMER. INDEP | PEACE &FRDM | MISC | D/S | TOTAL |
|-------------------------|--------|--------|----------------|----------------|------|-------|--------|
| CHINO UNIF | 8231 | 6102 | 136 | 19 | 17 | 828 | 15333 |
| COLTON UNIF | 10513 | 4021 | 180 | 28 | 13 | 887 | 15642 |
| FONTANA UNIF | 10676 | 3523 | 201 | 41 | 14 | 832 | 15287 |
| JURUPA UNIF | 7 | | | | | | 7 |
| MORONGO UNIF | 6615 | 5781 | 182 | 13 | 3 | 908 | 13502 |
| NEEDLES UNIF | 1746 | 852 | 18 | 1 | 1 | 173 | 2791 |
| REDLANDS UNIF | 9998 | 12789 | 209 | 33 | 21 | 1762 | 24812 |
| RIALTO UNIF | 9527 | 4723 | 178 | 25 | 15 | 912 | 15380 |
| RIM OF THE WORLD UNIF | 3365 | 3772 | 59 | 21 | 9 | 453 | 7679 |
| SAN BDND UNIF | 34317 | 16575 | 596 | 125 | 76 | 3301 | 54990 |
| SIERRA SANDS UNIF | 66 | 37 | | | | 10 | 113 |
| TRONA UNIF | 722 | 403 | 12 | 7 | | 91 | 1235 |
| YUCAIPA UNIF | 6343 | 6785 | 130 | 6 | 2 | 532 | 13798 |
| CHAFFEY HI | 33639 | 26398 | 553 | 101 | 82 | 3334 | 64107 |
| VICTOR VALLEY HI | 10661 | 9004 | 215 | 35 | 20 | 1346 | 21281 |
| BARSTOW COLLEGE | 7062 | 3422 | 180 | 15 | 15 | 828 | 11522 |
| CHAFFEY COLLEGE | 52546 | 36023 | 890 | 161 | 113 | 4994 | 94727 |
| COACHELLA COLLEGE | 6615 | 5781 | 182 | 13 | 3 | 908 | 13502 |
| KERN COLLEGE | 788 | 440 | 12 | 7 | | 101 | 1348 |
| RIVERSIDE COLLEGE | 7 | | | | | | 7 |
| SAN BDND COLLEGE | 77743 | 51684 | 1427 | 246 | 164 | 8385 | 139649 |
| VICTOR COLLEGE | 10644 | 8990 | 215 | 34 | 20 | 1345 | 21248 |
| COUNTY TOTALS | 155405 | 106340 | 2906 | 476 | 315 | 16561 | 282003 |

SAN BERNARDINO COUNTY REGISTRAR OF VOTERS
MUNICIPAL WATER DISTRICT SUMMARY
12-23-78

| <u>NAME OF DISTRICT</u> | <u>TOTAL VOTERS</u> |
|-----------------------------------|---------------------|
| BIG BEAR MWD - DIV 1 | 771 |
| BIG BEAR MWD - DIV 2 | 758 |
| BIG BEAR MWD - DIV 3 | 963 |
| BIG BEAR MWD - DIV 4 | 1,032 |
| BIG BEAR MWD - DIV 5 | 880 |
| CHINO BASIN MWD - DIV 1 | 21,695 |
| CHINO BASIN MWD - DIV 2 | 15,929 |
| CHINO BASIN MWD - DIV 3 | 22,285 |
| CHINO BASIN MWD - DIV 4 | 15,521 |
| CHINO BASIN MWD - DIV 5 | 19,377 |
| SAN BERNARDINO VALLEY MWD - DIV 1 | 21,243 |
| SAN BERNARDINO VALLEY MWD - DIV 2 | 19,522 |
| SAN BERNARDINO VALLEY MWD - DIV 3 | 25,979 |
| SAN BERNARDINO VALLEY MWD - DIV 4 | 27,540 |
| SAN BERNARDINO VALLEY MWD - DIV 5 | 28,597 |

(SEE DESERT PORTION)

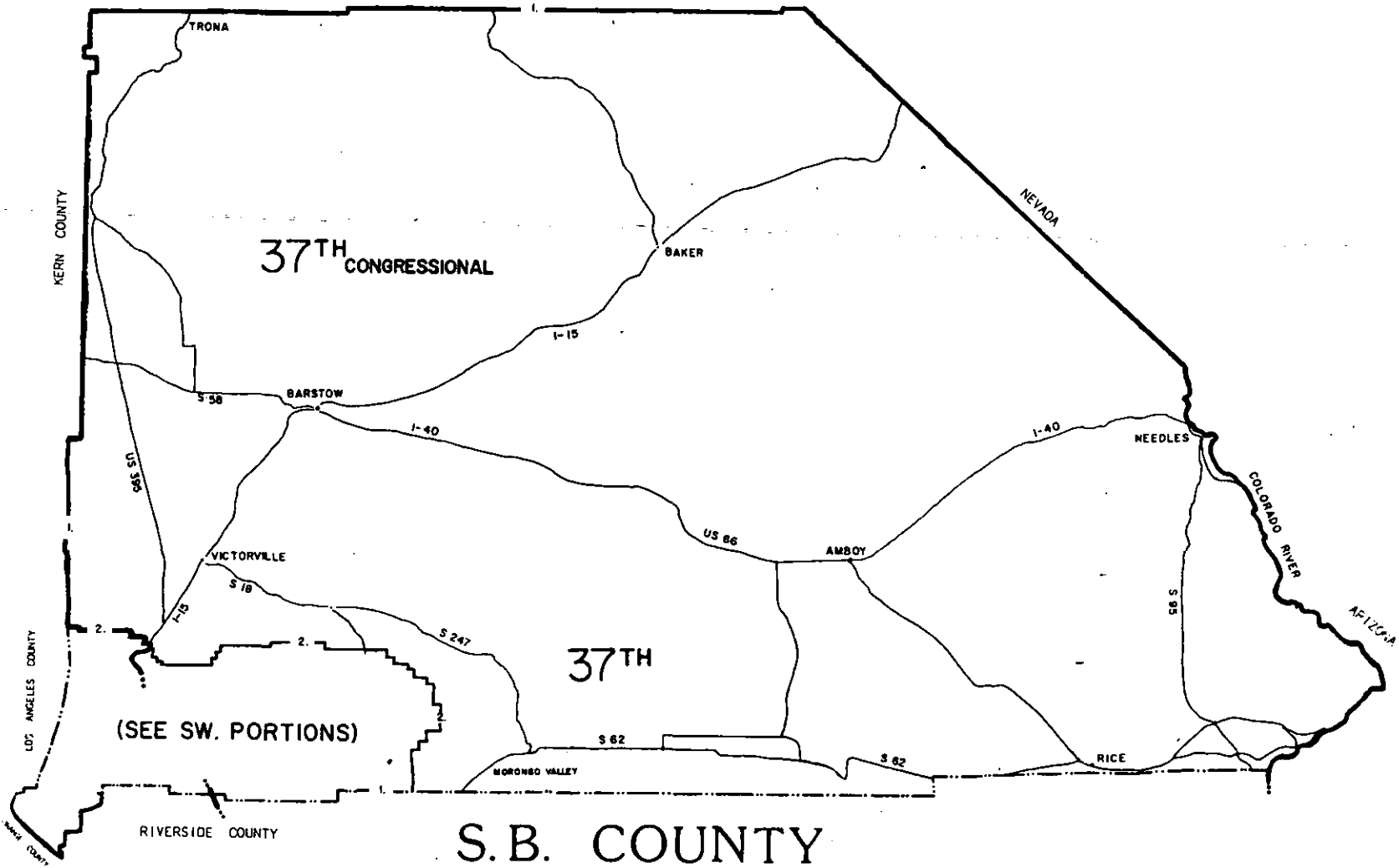


**Congressional District
BOUNDARY IDENTIFICATION**

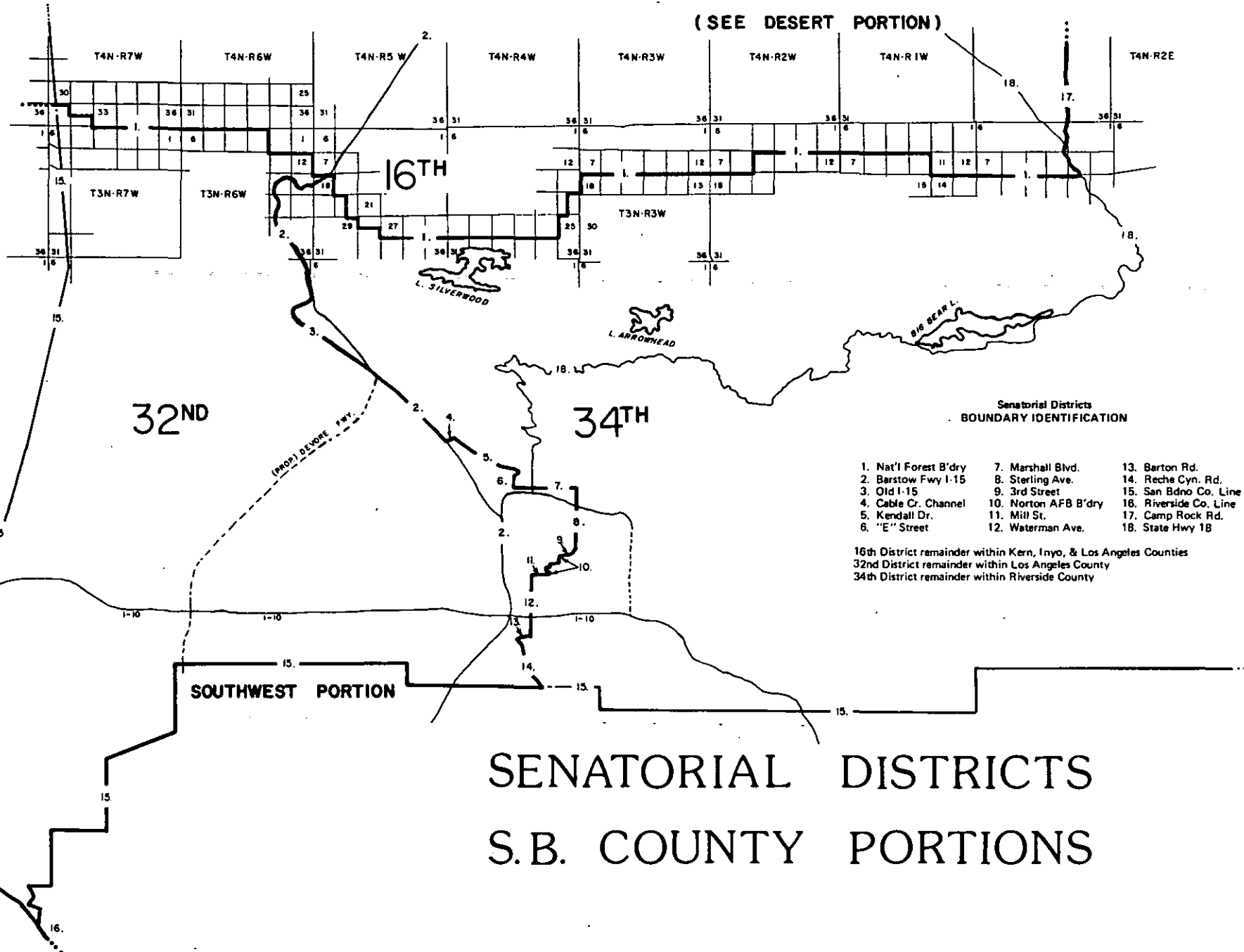
- | | | |
|-----------------------|--------------------------------|-------------------------|
| 1. Nat'l Forest B'dry | 13. Baseline | 24. I-10 Fwy. |
| 2. Barstow Fwy I-15 | 14. 3rd Street | 25. Rochester Ave. |
| 3. Old I-15 | 15. Norton AFB B'dry | 26. Foothill Blvd. |
| 4. Cable Cr. Channel | 16. Mill St. | 27. Cherry Ave. |
| 5. Kendall Dr. | 17. Barton Rd. | 28. Flood Control Chan. |
| 6. "E" Street | 18. State Hwy 18 | 29. Summit Ave. |
| 7. 28th Street | 19. Reche Canyon Rd. | 30. Citrus Ave. |
| 8. Waterman Ave. | 20. San Bernardino County Line | 31. Highland Ave. |
| 9. Highland Ave. | 21. Riverside Dr. | 32. Alder Ave. |
| 10. Sterling Ave. | 22. Archibald Ave. | 33. Rialto City Limits |
| 11. Pacific St. | 23. Turner Ave. | 34. Lytle Cr. Wash |
| 12. Elmwood Rd. | | 35. Riverside Ave. |

35th District remainder within Los Angeles County
 36th District remainder within Riverside County
 37th District remainder within Riverside County

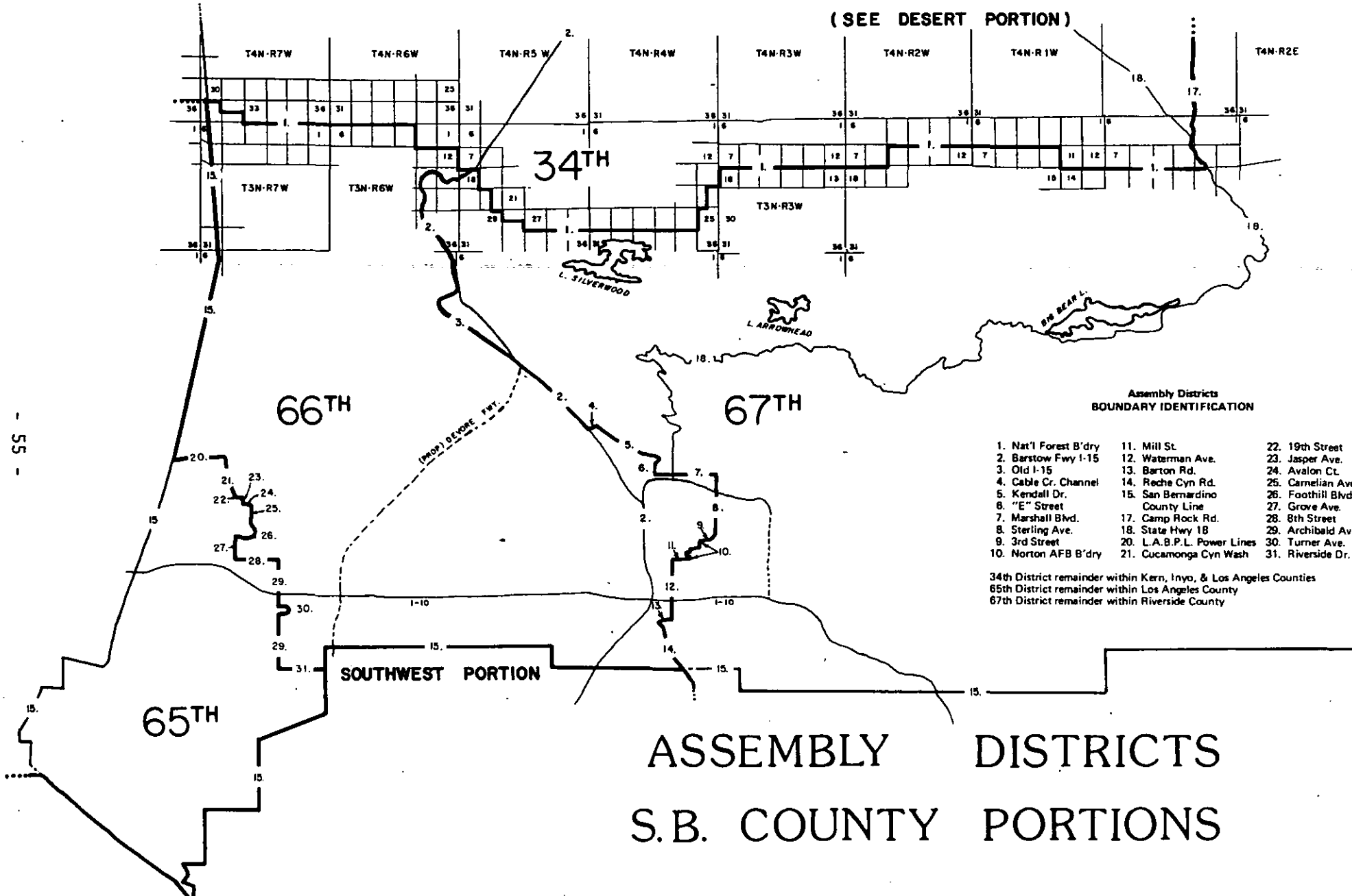
**CONGRESSIONAL DISTRICTS
S.B. COUNTY PORTIONS**



S.B. COUNTY DESERT PORTIONS



SENATORIAL DISTRICTS S.B. COUNTY PORTIONS



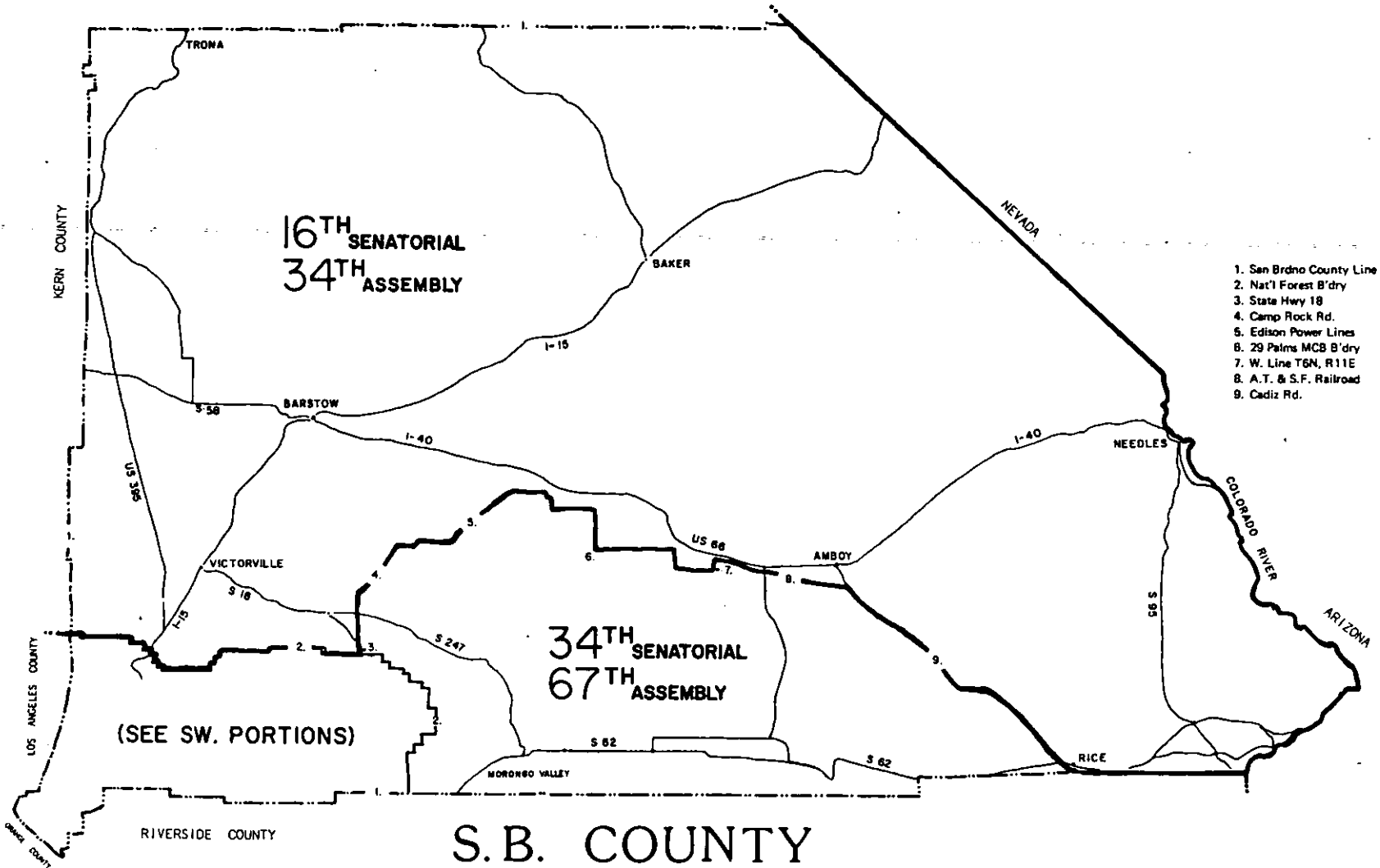
(SEE DESERT PORTION)

**Assembly Districts
BOUNDARY IDENTIFICATION**

- | | | |
|-----------------------|-----------------------------------|--------------------|
| 1. Nat'l Forest B'dry | 11. Mill St. | 22. 19th Street |
| 2. Barstow Fwy I-15 | 12. Waterman Ave. | 23. Jasper Ave. |
| 3. Old I-15 | 13. Barton Rd. | 24. Avalon Ct. |
| 4. Cable Cr. Channel | 14. Reche Cyn Rd. | 25. Carnelian Ave. |
| 5. Kendall Dr. | 15. San Bernardino County Line | 26. Foothill Blvd. |
| 6. "E" Street | 17. Camp Rock Rd. | 27. Grove Ave. |
| 7. Marshall Blvd. | 18. State Hwy 18 | 28. 8th Street |
| 8. Sterling Ave. | 20. L.A.B.P.L. Power Lines | 29. Archibald Ave. |
| 9. 3rd Street | 21. Cucamonga Cyn Wash | 30. Turner Ave. |
| 10. Norton AFB B'dry | | 31. Riverside Dr. |

34th District remainder within Kern, Inyo, & Los Angeles Counties
 65th District remainder within Los Angeles County
 67th District remainder within Riverside County

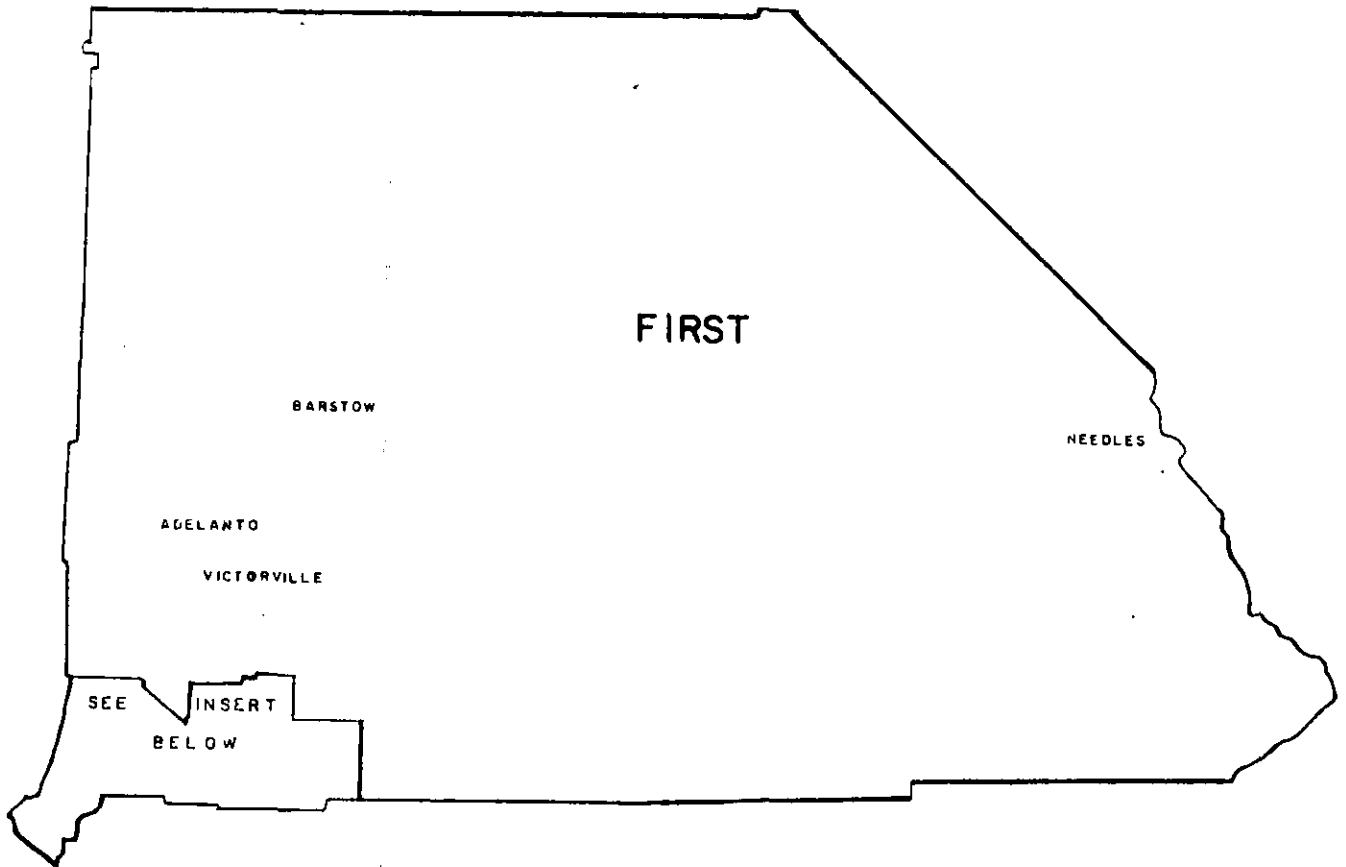
**ASSEMBLY DISTRICTS
S.B. COUNTY PORTIONS**



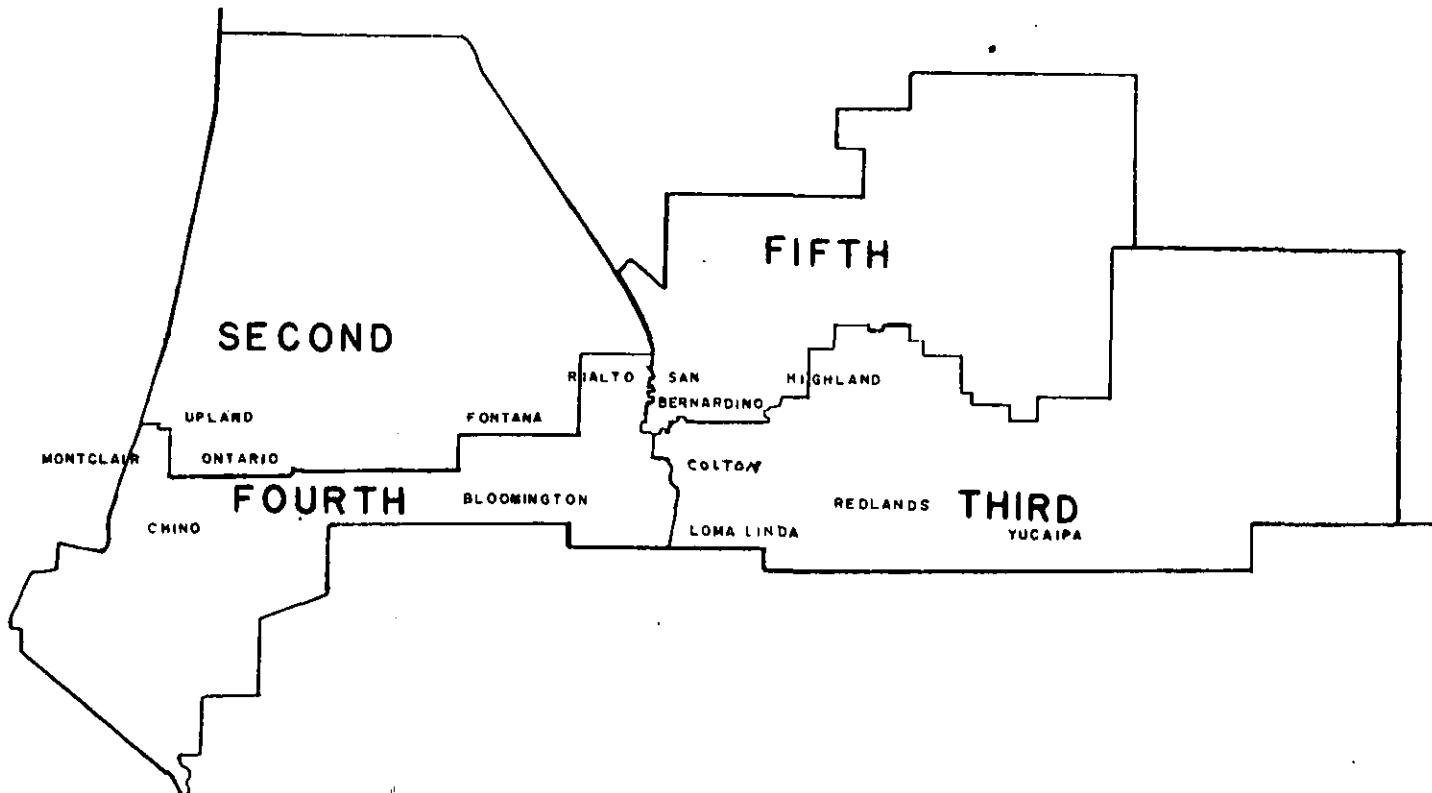
- 1. San Brdno County Line
- 2. Nat'l Forest B'dry
- 3. State Hwy 18
- 4. Camp Rock Rd.
- 5. Edison Power Lines
- 6. 29 Palms MCB B'dry
- 7. W. Line T6N, R11E
- 8. A.T. & S.F. Railroad
- 9. Cadiz Rd.

S.B. COUNTY DESERT PORTIONS

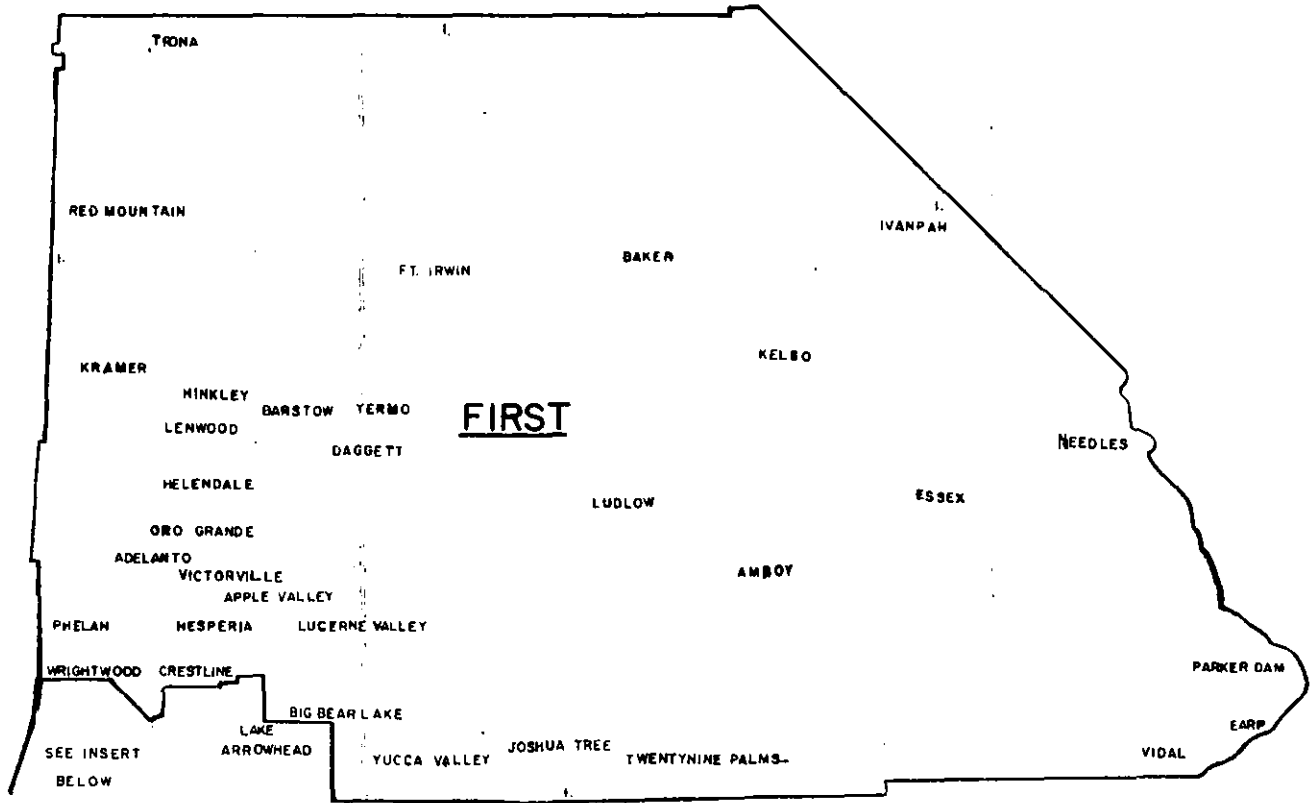
SAN BERNARDINO COUNTY



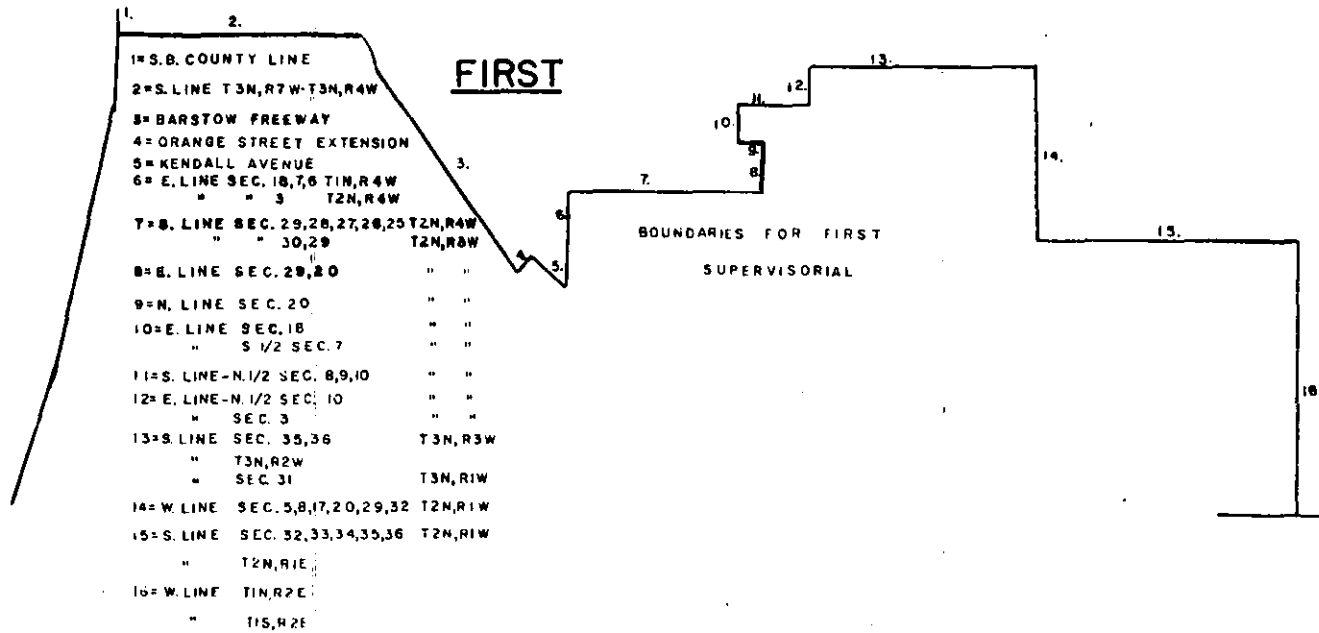
SUPERVISORIAL DISTRICTS



FIRST SUPERVISORIAL DISTRICT BOUNDARIES



DETAILED DESCRIPTION



SECOND & FOURTH SUPERVISORIAL DISTRICT BOUNDARIES

4TH

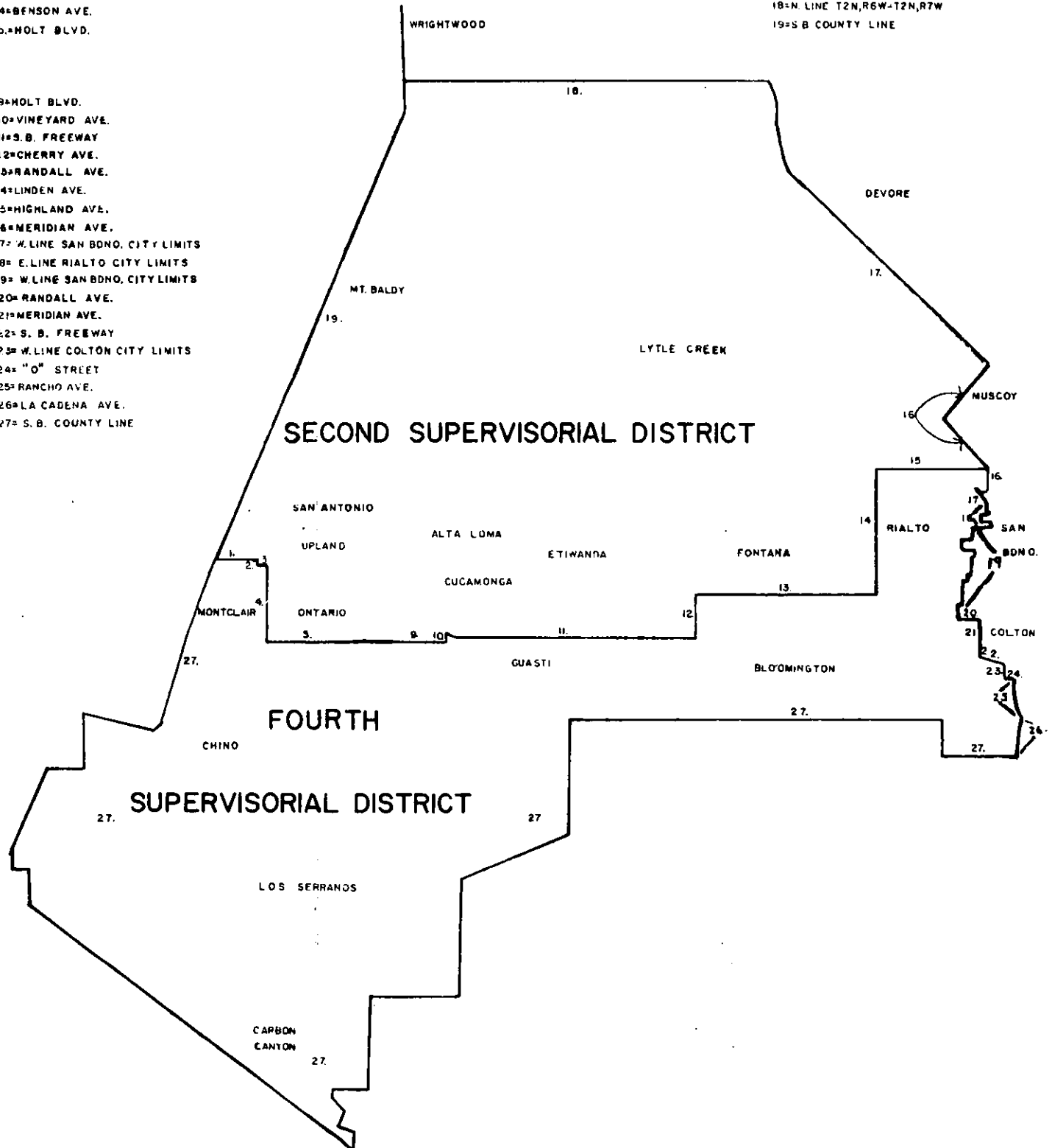
- 1= N LINE MONTCLAIR CITY LIMITS
- 2= CENTRAL AVE.
- 3= A.T.S.F. R.R.
- 4= BENSON AVE.
- 5= HOLT BLVD.

- 9= HOLT BLVD.
- 10= VINEYARD AVE.
- 11= S. B. FREEWAY
- 12= CHERRY AVE.
- 13= RANDALL AVE.
- 14= LINDEN AVE.
- 15= HIGHLAND AVE.
- 16= MERIDIAN AVE.
- 17= W. LINE SAN BDN. CITY LIMITS
- 18= E. LINE RIALTO CITY LIMITS
- 19= W. LINE SAN BDN. CITY LIMITS
- 20= RANDALL AVE.
- 21= MERIDIAN AVE.
- 22= S. B. FREEWAY
- 23= W. LINE COLTON CITY LIMITS
- 24= "O" STREET
- 25= RANCHO AVE.
- 26= LA CADENA AVE.
- 27= S. B. COUNTY LINE

FIRST
SUPERVISORIAL
DISTRICT

2ND

- 1 THRU 15= SAME AS 4TH SUPERVISORIAL DIST.
- 16= S.B. FLOOD CONTROL CHANNAL
- 17= BARSTOW FREEWAY
- 18= N. LINE T2N,R6W-T2N,R7W
- 19= S B COUNTY LINE



THIRD & FIFTH SUPERVISORIAL DISTRICT BOUNDARIES

3RD

- 1=COLTON CITY LIMITS
- 2=MILL ST.
- 3=E. & N. LINE NORTON AFB
- 4=STERLING AVE.
- 5=HIGHLAND AVE.
- 6=VICTORIA AVE.
- 7=NATL. FOREST BOUNDARY
- 8=W. LINE SEC. 10 T1S,R2W
" S 1/2 SEC. 3 T1S,R2W
- 9=N. LINE S. 1/2 SEC. 3,2,1 T1S,R2W
- 10=W. LINE N. 1/2 SEC. 6 T1S,R2W
" T1N,RIW
- 11=N. LINE T1N,RIW-T1N,R2W
- 12=E. LINE T1N,RIE-T1S,RIE
- 13=SAN BDNQ. COUNTY LINE
- 14=LA CADENA DR.
- 15=RANCHO AVE.
- 16="O" STREET
- 17=W. LINE COLTON CITY LIMITS
- 18=SAN BDNQ. FREEWAY
- 19=MERIDIAN AVE.

5TH

- 1=THRU 10=3RD SUPERVISORIAL DIST BOUNDARY N SIDE
- 11=S. LINE SEC 31 T2N,RIW
- 12=E. LINE SEC. 31,30,19,18,7,6 T2N,RIW
- 13=N. LINE SEC 6 T2N,RIW
" T2N,R2W
" SEC. 1,2 T2N,R3W
- 14=W. LINE SEC. 2 T2N,R3W
" N. 1/2 SEC. 11 T2N,R3W
- 15=N. LINE S. 1/2 SEC. 10,9,8 T2N,R3W
- 16=W. LINE S. 1/2 SEC. 8 T2N,R3W
" SEC. 17 T2N,R3W
- 17=S. LINE SEC. 17 T2N,R3W
- 18=W. LINE SEC. 21,20 T2N,R3W
- 19=N. LINE SEC. 32,31 T1N,R3W
" SEC. 36,35,34,33,32 T1N,R4W
- 20=W. LINE SEC. 32 T1N,R4W
" " 5,8 T1S,R4W
" N 1/2, N. 1/2 SEC. 17 T1S,R4W
- 21=KENDALL AVE.
- 22=ORANGE ST. EXTENSION
- 23=SAN BDNQ. FLOOD CONTROL
- 24=MERIDIAN AVE.
- 25=SAN BDNQ. CITY LIMITS
- 26=RIALTO CITY LIMITS
- 27=SAN BDNQ. CITY LIMITS
- 28=RANDALL AVE.

FIRST SUPERVISORIAL DISTRICT

