

Date Printed: 06/11/2009

JTS Box Number: IFES_74
Tab Number: 65
Document Title: Voting Instructions for AccuVote Touch
Screen Voting System
Document Date: 2002
Document Country: United States --
Maryland
Document Language: English
IFES ID: CE02298



* 7 7 8 7 C A 1 8 - 9 1 F B - 4 C 1 F - B 9 B 9 - 1 8 3 B 3 3 3 F 2 3 0 6 *

Maryland Votes!



In Touch With The Future

Voting Instructions For AccuVote TS Voting System

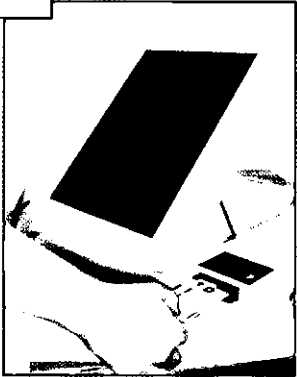


***ELECTIONS IN THE
21ST CENTURY
AND BEYOND***

VOTING INSTRUCTIONS

FOR THE ACCUVOTE TS

1



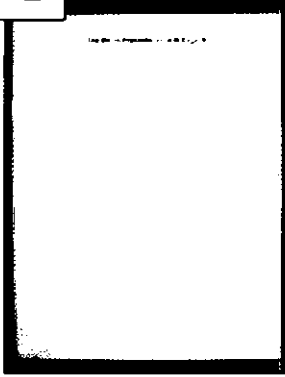
Start:

Insert voter access card into slot at right of screen.

Card should be face up with the arrow first. Push card firmly until it clicks.

IF YOU NEED ASSISTANCE, PLEASE CONTACT THE CHIEF ELECTION JUDGE.

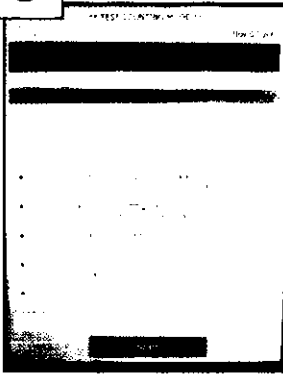
2



Select Ballot Language:

Touch "Start".

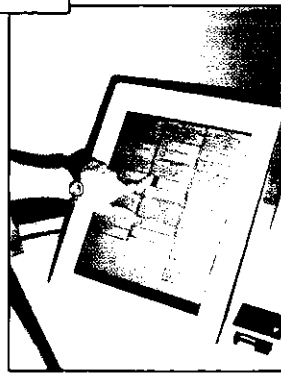
3



Read "Instructions to Voters":

Touch "Start" to vote.

4



Select Candidates or Questions:

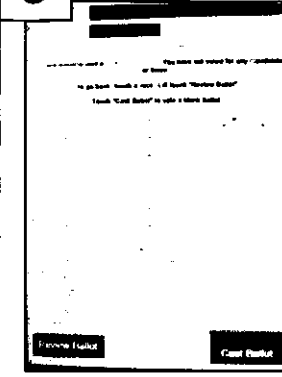
Touch the box next to the candidate or question of your choice.

To change or cancel your selection, touch the box again.

Touch "Next" to advance the ballot page.

Touch "Previous" to go back.

5



Review & Cast Ballot:

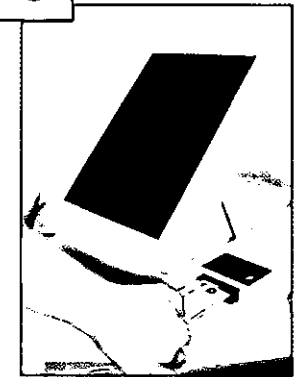
On Summary Page, review your choices.

To go back, touch a race or touch "Review Ballot".

Touch "Cast Ballot" when ready to record your vote.

Once your ballot is "cast" you may not vote again.

6



Finish Voting:

Remove the voter access card and return it to the election judge.

2002 Gubernatorial Primary and General Election

Primary Election: September 10, 2002

General Election: November 5, 2002

Polls Open: 7:00 AM

Polls Close: 8:00 PM

Dates to Remember:

June 17, 2002	Last day to change Party Affiliation
August 20, 2002	Voter Registration ends for Primary Election
September 10, 2002	Primary Election Day
September 23, 2002	Voter Registration Reopens
October 15, 2002	Voter Registration ends for General Election
November 5, 2002	General Election Day
November 18, 2002	Voter Registration Reopens

For voter registration status, location of assigned polling place, or accessibility information, call the Board of Elections at 240-777-8500 Monday–Friday, 8:30 AM to 5:00 PM. For 24-hour voter registration information service call 240-777-VOTE.



**Montgomery County
Board of Elections**

Post Office Box 4333
Rockville, Maryland 20849-4333

Located at:

751 Twinbrook Parkway
Rockville, MD 20851-1428

Phone: 240-777-8500
MD Relay: 1-800-735-2258
FAX: 240-777-8505

E-mail:

elections@co.mo.md.us

Web Site:

www.777vote.org

or

www.emontgomery.org

or

www.mdvotes.org

Board of Elections

Susan E. Bratten	President
Hilma R. Blair	Secretary
Alan J. Ferraro	Member
Lorraine Rooks Hollen	Substitute Member
Zaida Arguedas	Substitute Member

Administrative Staff

Election Director
Margaret A. Jurgensen

Deputy Director
Sara N. Harris