

# Women in the State/Region Hluttaws

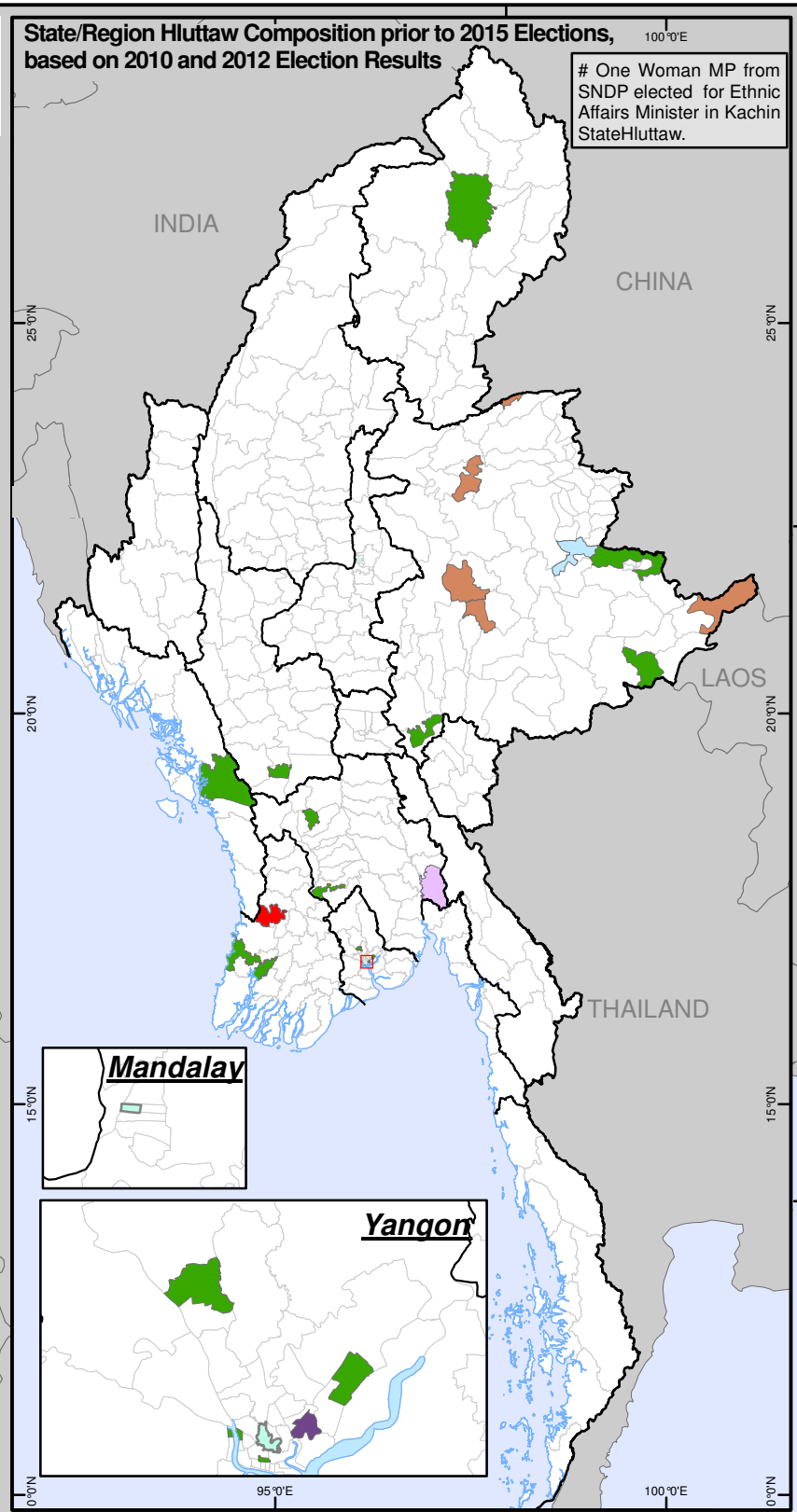
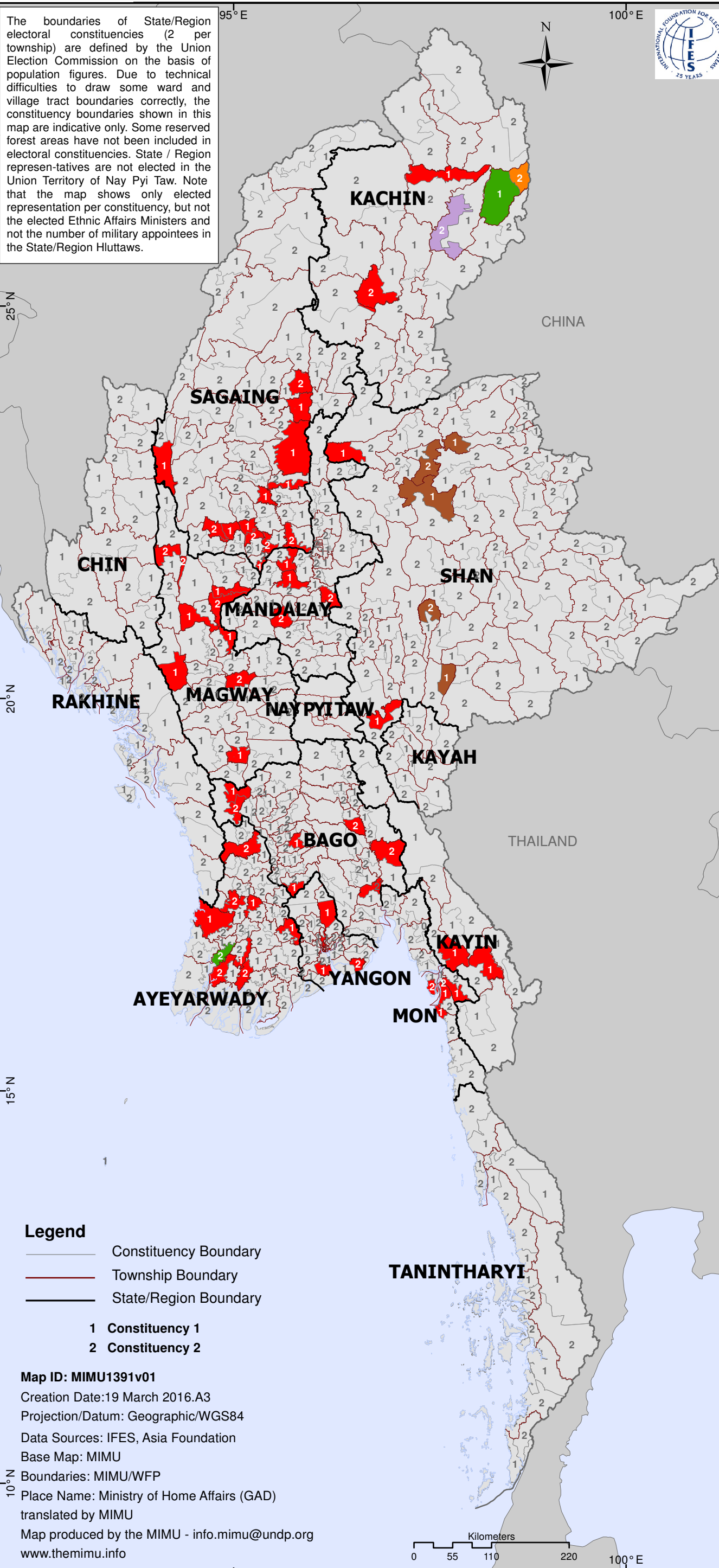
## 2015 Elections



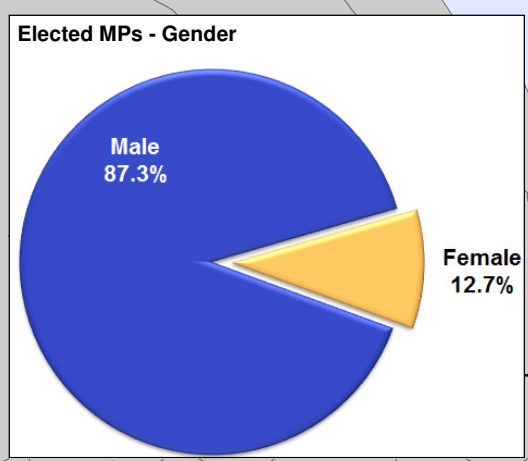
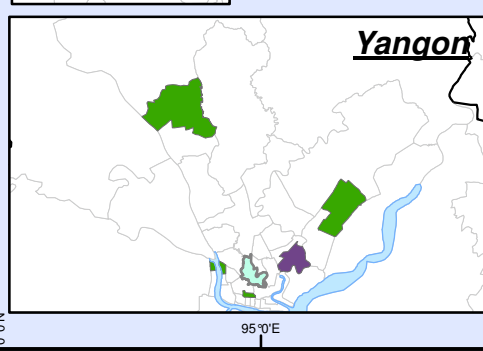
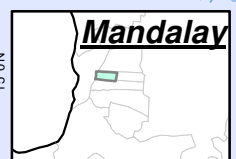
Humanitarian Aid and Civil Protection



The boundaries of State/Region electoral constituencies (2 per township) are defined by the Union Election Commission on the basis of population figures. Due to technical difficulties to draw some ward and village tract boundaries correctly, the constituency boundaries shown in this map are indicative only. Some reserved forest areas have not been included in electoral constituencies. State / Region representatives are not elected in the Union Territory of Nay Pyi Taw. Note that the map shows only elected representation per constituency, but not the elected Ethnic Affairs Ministers and not the number of military appointees in the State/Region Hluttaws.



# One Woman MP from SNDP elected for Ethnic Affairs Minister in Kachin State Hluttaw.



**Legend**

- Constituency Boundary
- Township Boundary
- State/Region Boundary

1 Constituency 1  
2 Constituency 2

Map ID: MIMU1391v01  
 Creation Date: 19 March 2016.A3  
 Projection/Datum: Geographic/WGS84  
 Data Sources: IFES, Asia Foundation  
 Base Map: MIMU  
 Boundaries: MIMU/WFP  
 Place Name: Ministry of Home Affairs (GAD)  
 translated by MIMU  
 Map produced by the MIMU - info.mimu@undp.org  
 www.themimu.info

Number of Women in the State/Region Hluttaw			
Colour	Party Name	2015	before
Light Green	Democratic Party (Myanmar)		2
Purple	Kachin State Democracy Party	1	
Light Blue	Lahu National Development Party	2	1
Orange	Lisu National Development Party		
Red	National League for Democracy	70	1
Dark Purple	National Democratic Force		1
Light Purple	National Unity Party		1
Brown	Shan Nationalities Democratic Party		6
Dark Brown	Shan Nationalities League for Democracy	5	
Green	Union Solidarity and Development Party	2	14
<b>Total Elected Women</b>		<b>80</b>	<b>26</b>
<b>Total Elected Men</b>		<b>550</b>	<b>608</b>

Copyright © Myanmar Information Management Unit 2016. May be used free of charge with attribution.